

Genomic DNA from *Toxoplasma gondii*, ME49 (B7 clone)

Catalog No. NR-15430

Product Description: Genomic DNA was isolated from *Toxoplasma gondii* (*T. gondii*), ME49 (B7 clone), which was originally isolated from a sheep in California.

Lot¹: 58723097

Manufacturing Date: 29JUL2009

TEST	SPECIFICATIONS	RESULTS
Agarose Gel Electrophoresis	High molecular weight chromosomal DNA	High molecular weight chromosomal DNA (Figure 1)
Content by PicoGreen[®] Measurement	1 to 3 µg in 25 to 100 µL per vial	2.1 µg in 48 µL per vial (44 µg/mL)
Functional Activity by PCR Amplification² 850 locus SAG1 locus	~ 750 bp amplicon ~ 250 bp amplicon	~ 750 bp amplicon ~ 250 bp amplicon
Genotyping³ 850 locus (<i>Sfa</i> NI digestion) SAG1 locus ⁴	Consistent with parental Type II strain Consistent with parental Type II strain	Consistent with parental Type II strain Consistent with parental Type II strain
OD₂₆₀/OD₂₈₀ Ratio	1.7 to 2.0	2.0
Protozoan Inactivation 100% of vial contents inoculated on human foreskin fibroblast monolayers (ATCC [®] CRL-1634 [™]) ⁵	Cell line infection not detected	Cell line infection not detected

¹NR-15430 was produced from a culture of NR-10150 grown in human foreskin fibroblasts (Hs27; ATCC[®] CRL-1634[™]) in cell cultivation medium for parasites (DMEM; [ATCC[®] medium 2222](#); adjusted to contain 10% heat-inactivated fetal bovine serum). The culture was propagated in 95% air, 5% CO₂ at 37°C until lysis of the host cell monolayer was reached. Tachyzoites of NR-10150 were harvested and genomic DNA was extracted using the Qiagen DNeasy Blood and Tissue Kit (Catalog no. 69504).

²Primer sequences and conditions for PCR are available upon request.

³PCR was performed separately for the 850 and SAG1 loci. Where appropriate, samples were subjected to restriction enzyme digestion as described in the *Toxoplasma* Genome Map website (http://toxomap.wustl.edu/Toxo_Genetic_Map_Table.html).

⁴Based on migration pattern of the SAG1 amplicon from NR-15430 during agarose gel electrophoresis as compared to NR-15431 (Genomic DNA from *Toxoplasma gondii* CTG ARA-SYN)

⁵Incubated in DMEM (ATCC[®] 30-2002) and propagated in 95% air, 5% CO₂ for 7 days at 37°C.

Date: 21 OCT 2010

Signature: 

Title: Technical Manager, BEI Authentication or designee

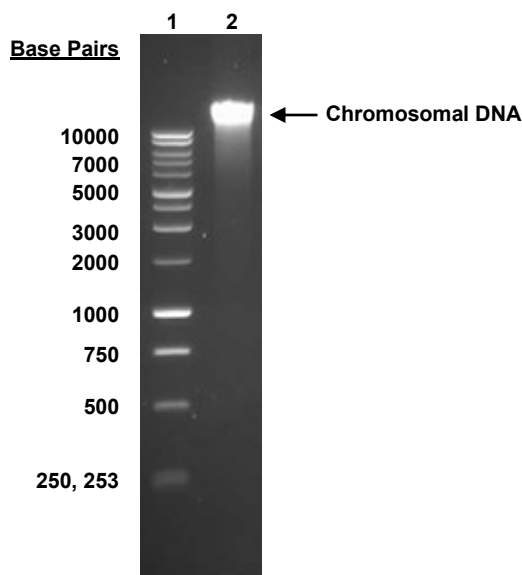
ATCC[®], on behalf of BEI Resources, hereby represents and warrants that the material provided under this certificate has been subjected to the tests and procedures specified and that the results described, along with any other data provided in this certificate, are true and accurate to the best of ATCC[®]'s knowledge.

ATCC[®] is a trademark of the American Type Culture Collection.

You are authorized to use this product for research use only. It is not intended for human use.



Figure 1



Lane 1: Promega 1 kb DNA Ladder (Catalog No. G5711)
Lane 2: 264 ng of NR-15430