

Genomic DNA from *Vibrio cholerae*, Strain 395

Catalog No. NR-15694

Product Description: Genomic DNA was obtained from a preparation of *Vibrio cholerae* (*V. cholerae*), strain 395 (Ogawa 395; O395).

Lot¹: 58956017

Manufacturing Date: 14MAY2010

TEST	SPECIFICATIONS	RESULTS
Sequencing of 16S Ribosomal RNA Gene (~ 680 base pairs)	Identical to BEI Resources NR-9906 Consistent with <i>V. cholerae</i> ²	Identical to BEI Resources NR-9906 Consistent with <i>V. cholerae</i> ²
Agarose Gel Electrophoresis	High molecular weight chromosomal DNA	High molecular weight chromosomal DNA (Figure 1)
Concentration by PicoGreen[®] Measurement	4 to 6 µg in 25 to 100 µL per vial	6.5 µg in 57 µL per vial (115 µg/mL) ³
Functional Activity by PCR Amplification 16S ribosomal RNA gene	~ 1500 bp amplicon	~ 1500 bp amplicon
OD₂₆₀/OD₂₈₀ Ratio	1.7 to 1.9	1.9
Bacterial Inactivation 10% of total yield plated on Tryptic Soy Agar ^{4,5}	No viable bacteria detected	No viable bacteria detected

¹The bacterial preparation used for extraction of genomic DNA was produced by inoculation of ATCC[®] 39541™ (Lot 99336) into Tryptic Soy Broth. After incubation for 24 hours at 37°C in an aerobic atmosphere, genomic DNA was extracted using proprietary technology.

²Also consistent with other *Vibrio* species

³The µg of DNA in the vials is greater than required by current specifications

⁴7 days at 37°C in an aerobic atmosphere

⁵An extraction procedure was used that has been shown to consistently inactivate 100% of Gram-positive and Gram-negative bacteria.

Date: 10 DEC 2010

Signature:



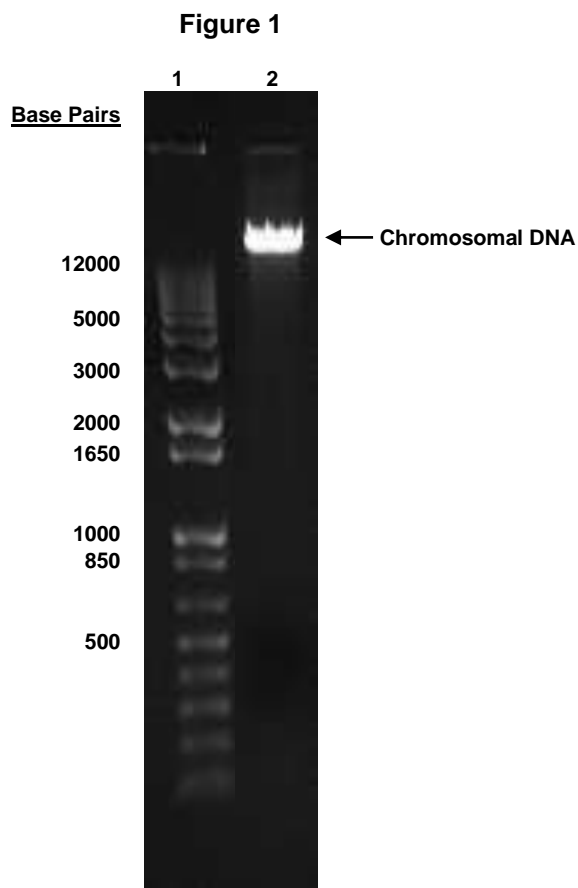
Title: Technical Manager, BEI Authentication or designee

ATCC[®], on behalf of BEI Resources, hereby represents and warrants that the material provided under this certificate has been subjected to the tests and procedures specified and that the results described, along with any other data provided in this certificate, are true and accurate to the best of ATCC[®]'s knowledge.

ATCC[®] is a trademark of the American Type Culture Collection.

You are authorized to use this product for research use only. It is not intended for human use.





Lane 1: Invitrogen™ TrackIt 1 Kb Plus DNA Ladder™
Lane 2: 200 ng of NR-15694