

**Fraction 1 Capsular Antigen (F1) from *Yersinia pestis* with N-terminal Histidine Tag, Expressed in *Escherichia coli***

**Catalog No. NR-15771**

This reagent is the property of the U. S. Government.

**Product Description:** NR-15771 is a recombinant form of the *Yersinia pestis* (*Y. pestis*) fraction 1 capsular antigen (F1). The recombinant protein was expressed in *Escherichia coli* and purified by nickel affinity chromatography.

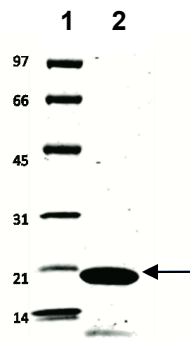
**Lot: 58989373**

**Manufacturing Date: 15JAN2010**

TEST	SPECIFICATIONS	RESULTS
Appearance	Clear and colorless, no particulate matter	Clear and colorless, no particulate matter
Purity by SDS-PAGE densitometer scan	18 kDa band represents > 90% of total staining intensity above background	18 kDa band represents 93% of total staining intensity above background (Figure 1)
Identification by Mass Spectrometry of Protease Digested Protein	> 50% of total residues accounted for in peptides of expected mass	79% of total residues accounted for in peptides of expected mass
Endotoxin Content (Limulus Amoebocyte Lysate Assay)	Report results	169 EU/mg
Concentration by Bicinchoninic Acid Protein Assay	Report results	1.04 mg/mL
Functional Activity <sup>1</sup> Western Blot NR-15771 Bovine serum albumin (BSA) ELISA	Reactive Nonreactive Report results	Reactive (Figure 2) Nonreactive Reactive

<sup>1</sup>Using mouse monoclonal antibody (IgG1) to *Yersinia pestis* F1 (YPF19): (Santa Cruz Biotechnology sc-52303)

**Figure 1 — SDS-PAGE**



Lane 1 – Bio-Rad SDS-PAGE  
Protein Standards, Low Range  
Lane 2 – NR-15771

Figure 2 - Western Blot



Lane 1 — Invitrogen™  
MagicMark™ Western  
Protein Standard  
Lane 2 — NR-15771 (20 µg)  
Lane 3 — BSA (20 µg)

Date: 04 JAN 2011

Signature: *Dorothy C. Young*

Title: Technical Manager, BEI Authentication or designee

ATCC®, on behalf of BEI Resources, hereby represents and warrants that the material provided under this certificate has been subjected to the tests and procedures specified and that the results described, along with any other data provided in this certificate, are true and accurate to the best of ATCC®'s knowledge.

ATCC® is a trademark of the American Type Culture Collection.

You are authorized to use this product for research use only. It is not intended for human use.

