

***Psychrobacter* sp., Strain 1501**

Catalog No. HM-332

Product Description: *Psychrobacter* sp., strain 1501 was isolated from human blood in New York, U. S. A.

Lot¹: 59539214

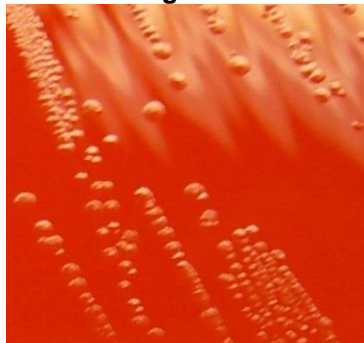
Manufacturing Date: 12NOV2010

TEST	SPECIFICATIONS	RESULTS
Phenotypic Analysis Cellular morphology Colony morphology ²	Gram-negative rods Report results	Gram-negative rods Circular, entire, slightly raised, shiny and grey (Figure 1)
Genotypic Analysis Sequencing of 16S ribosomal RNA gene (~ 1410 base pairs)	≥ 99% identical to depositor's sequence Consistent with <i>Psychrobacter</i> sp.	≥ 99% identical to depositor's sequence Consistent with <i>Psychrobacter</i> sp.
Viability (post-freeze)²	Growth	Growth

¹*Psychrobacter* sp., strain 1501 was deposited by Dr. Kimberlee A. Musser, Chief, Bacterial Diseases, Division of Infectious Diseases, Wadsworth Center, New York State Department of Health, Albany, New York. The deposited material was inoculated into Tryptic Soy Broth and incubated for 48 hours at 37°C in an aerobic atmosphere. Broth inoculum was added to Kolles which were grown 48 hours at 37°C to produce this lot.

²48 hours at 37°C on Tryptic Soy Agar with 5% sheep blood

Figure 1



Date: 09 FEB 2011

Signature: 

Title: Technical Manager, BEI Authentication or designee

ATCC®, on behalf of BEI Resources, hereby represents and warrants that the material provided under this certificate has been subjected by ATCC® to the tests and procedures specified and that the results described, along with any other data provided in this certificate, are true and accurate to the best of ATCC®'s knowledge.

ATCC® is a trademark of the American Type Culture Collection.

You are authorized to use this product for research use only. It is not intended for human use.

