

**Genomic DNA from *Clostridium difficile*, Isolate 11**

**Catalog No. NR-13602**

**Product Description:** Genomic DNA was obtained from a preparation of *Clostridium difficile* (*C. difficile*), isolate 11 which was isolated from a human patient from the Mid-Atlantic region of the United States in 2008/2009.

**Lot<sup>1</sup>: 59147497**

**Manufacturing Date: 27AUG2010**

TEST	SPECIFICATIONS	RESULTS
<b>Sequencing of 16S Ribosomal RNA Gene (~ 1386 base pairs)</b>	Consistent with <i>C. difficile</i>	Consistent with <i>C. difficile</i>
<b>Agarose Gel Electrophoresis</b>	High molecular weight chromosomal DNA	High molecular weight chromosomal DNA (Figure 1)
<b>Concentration by PicoGreen<sup>®</sup> Measurement</b>	0.7 to 1.5 µg in 25 to 100 µL per vial	0.9 µg in 84 µL per vial (10 µg/mL)
<b>Functional Activity by PCR Amplification</b> 16S ribosomal RNA gene	~ 1500 bp amplicon	~ 1500 bp amplicon
<b>OD<sub>260</sub>/OD<sub>280</sub> Ratio</b>	1.7 to 1.9	1.7
<b>Bacterial Inactivation</b> 10% of total yield plated on CDC anaerobic blood agar <sup>2,3</sup>	No viable bacteria detected	No viable bacteria detected

<sup>1</sup>The bacterial preparation used for extraction of genomic DNA was produced by Modified Reinforced Clostridial Broth ([ATCC medium 2107](#)) culture of the deposited material. After incubation for 48 hours at 37°C in an anaerobic atmosphere (80% N<sub>2</sub>:10% CO<sub>2</sub>:10% H<sub>2</sub>), genomic DNA was extracted using proprietary technology.

<sup>2</sup>7 days at 37°C in an anaerobic atmosphere (80% N<sub>2</sub>:10% CO<sub>2</sub>:10% H<sub>2</sub>)

<sup>3</sup>An extraction procedure was used that has been shown to consistently inactivate 100% of Gram-negative and Gram-positive bacteria.

**Date:** 11 FEB 2011

**Signature:**



**Title:**

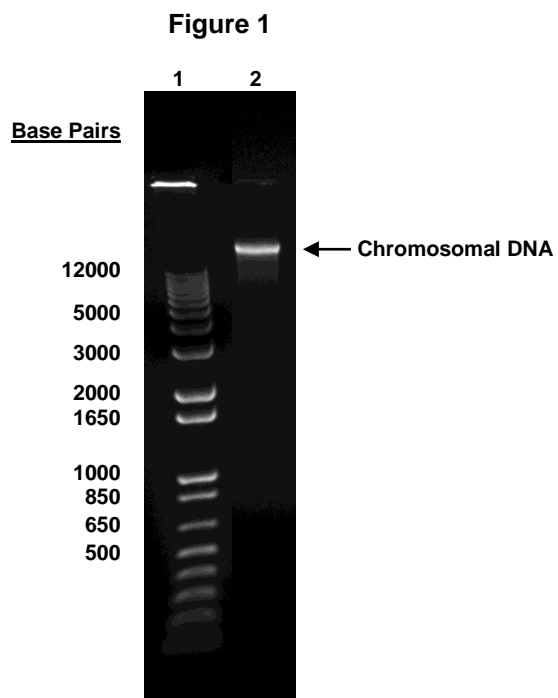
Technical Manager, BEI Authentication or designee

ATCC<sup>®</sup>, on behalf of BEI Resources, hereby represents and warrants that the material provided under this certificate has been subjected to the tests and procedures specified and that the results described, along with any other data provided in this certificate, are true and accurate to the best of ATCC<sup>®</sup>'s knowledge.

ATCC<sup>®</sup> is a trademark of the American Type Culture Collection.

You are authorized to use this product for research use only. It is not intended for human use.





Lane 1: Invitrogen™ TrackIt 1 Kb Plus DNA Ladder™  
Lane 2: 200 ng of NR-13602