

***Streptococcus pneumoniae*, Strain TCH8431**

Catalog No. HM-145

Product Description: *Streptococcus pneumoniae* (*S. pneumoniae*), strain TCH8431, serotype 19A, was isolated from a human respiratory tract.

Lot¹: 59618490

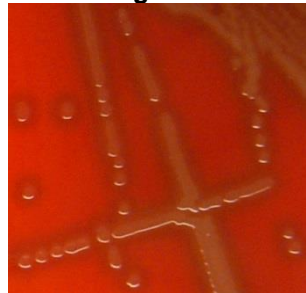
Manufacturing Date: 08DEC2010

TEST	SPECIFICATIONS	RESULTS
Phenotypic Analysis Cellular morphology Colony morphology ² Hemolysis on blood agar ²	Gram-positive cocci Report results α-hemolytic	Gram-positive cocci Circular, raised, entire, opaque and grey (Figure 1) α-hemolytic
Genotypic Analysis Sequencing of 16S ribosomal RNA gene (~ 1420 base pairs)	≥ 99% identical to depositor's sequence Identical to <i>S. pneumoniae</i> , TCH8431/19A (GenBank: CP001993)	≥ 99% identical to depositor's sequence Identical to <i>S. pneumoniae</i> , TCH8431/19A (GenBank: CP001993)
Viability (post-freeze)²	Growth	Growth

¹*S. pneumoniae*, strain TCH8431 was deposited by Sarah K. Highlander, Associate Professor, Department of Molecular Virology and Microbiology, Baylor College of Medicine, Houston, Texas. The deposited material was inoculated into Brain Heart Infusion Broth and incubated for 24 hours at 37°C in an aerobic atmosphere with 5% CO₂. Broth inoculum was added to Kolles which were grown 24 hours at 37°C and 5% CO₂ to produce this lot.

²24 hours at 37°C and 5% CO₂ on Tryptic Soy Agar with 5% sheep blood

Figure 1



Date: 11 FEB 2011

Signature: 

Title: Technical Manager, BEI Authentication or designee

ATCC®, on behalf of BEI Resources, hereby represents and warrants that the material provided under this certificate has been subjected by ATCC® to the tests and procedures specified and that the results described, along with any other data provided in this certificate, are true and accurate to the best of ATCC®'s knowledge.

ATCC® is a trademark of the American Type Culture Collection. You are authorized to use this product for research use only. It is not intended for human use.

