

Enterococcus faecalis, Strain TUSoD Ef11

Catalog No. HM-51

Product Description: *Enterococcus faecalis* (*E. faecalis*), strain TUSoD Ef11 was isolated on January 19, 2005, from an infected dental root canal of a patient with periapical periodontitis in Philadelphia, Pennsylvania, USA.

Lot^{1,2}: 59476574

Manufacturing Date: 10SEP2010

TEST	SPECIFICATIONS	RESULTS
Phenotypic Analysis Cellular morphology Colony morphologies ^{3,4}	Gram-positive cocci Report results	Gram-positive cocci Colony type 1: Circular, entire, low convex and gray (Figure 1) Colony type 2: Circular, entire, low convex and white (Figure 1)
Genotypic Analysis Sequencing of 16S ribosomal RNA gene (~ 1410 base pairs)	Consistent with <i>E. faecalis</i>	Consistent with <i>E. faecalis</i>
Viability (post-freeze)⁴	Growth	Growth

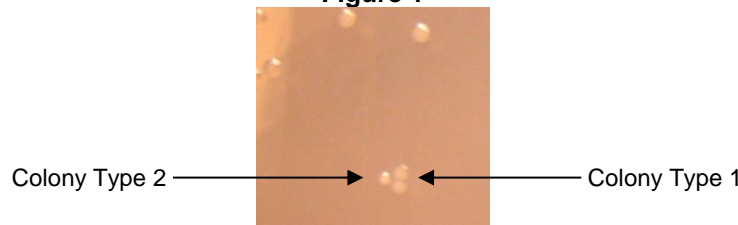
¹Quality control of HMP material is only performed to demonstrate that the material distributed by BEI Resources is identical to the deposited material. It should not be considered a complete characterization of the deposited organism.

²*E. faecalis*, strain TUSoD Ef11 was deposited by Roy H. Stevens, D.D.S., M.S., Professor and Chairman, Department of Endodontology, Kornberg School of Dentistry, Temple University, Philadelphia, Pennsylvania. The deposited material was inoculated into Tryptic Soy broth and incubated for 24 hours at 37°C in an aerobic atmosphere. Broth inoculum was added to kolles which were grown 24 hours at 37°C to produce this lot.

³Two colony types were observed. Plating of the individual colony types showed that they reverted to the mixed colony type. The 16S gene of each colony type was sequenced and determined to be 100% identical to each other and consistent with *E. faecalis*.

⁴24 hours at 37°C in an aerobic atmosphere on Tryptic Soy agar

Figure 1



Date: 14 NOV 2013

Signature: 

Title: Technical Manager, BEI Authentication or designee

ATCC®, on behalf of BEI Resources, hereby represents and warrants that the material provided under this certificate has been subjected to the tests and procedures specified and that the results described, along with any other data provided in this certificate, are true and accurate to the best of ATCC®'s knowledge.

ATCC® is a trademark of the American Type Culture Collection.

You are authorized to use this product for research use only. It is not intended for human use.

