

Polyclonal Anti-Epsilon Toxin from *Clostridium perfringens* (immune globulin G, Rabbit)

Catalog No. NR-865

This reagent is the property of the U.S. government.

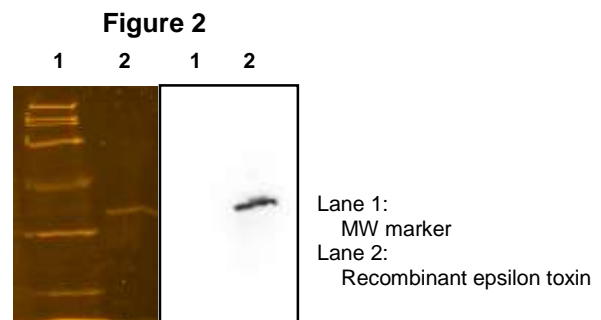
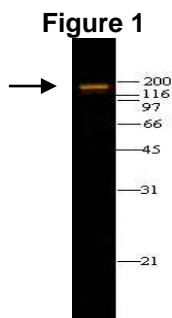
Product Description: Polyclonal immune globulin G antibody specific to the epsilon toxin from *Clostridium perfringens* (*C. perfringens*) was produced by immunization of rabbits with peptides that correspond to distinct internal regions of the full-length epsilon toxin. The peptides were conjugated to keyhole limpet hemocyanin (KLH) using a cysteine added to the carboxyl-terminal end (underlined) and were composed of the following amino acid sequences: 98 NPKVELDGEPSMNYLEDC and 298 EYVIPVDKKEKSNDSNIC. The polyclonal immune globulin G antibody was purified by caprylic acid precipitation.

Lot: 5051551

Manufacturing Date: SEP2005

TEST	SPECIFICATIONS	RESULTS
Appearance	Clear and colorless No particulate matter	Clear and colorless No particulate matter
PAGE (SYPRO Orange densitometer scan)	Dominant band ~ 150 kDa > 90% pure	Dominant band ~ 150 kDa > 90% pure (see Figure 1)
Concentration by Bicinchoninic Acid Protein Assay	1 mg/mL	1 mg/mL
Functional Activity Western Blot ¹ Recombinant epsilon toxin Epsilon toxin from <i>C. perfringens</i> Unrelated <i>C. perfringens</i> proteins ELISA titer Recombinant epsilon toxin	Reactive Reactive Not reactive Report results	Reactive (see Figure 2) Reactive Not reactive > 1:10,000
Absorbance Ratio (OD₂₈₀/OD₂₆₀)	≥ 1.7	1.9
Absorbance Ratio (OD₂₈₀/OD₃₁₀)	≥ 10	48
Sterility	Filter sterilized (0.22 μM filter)	Filter sterilized (0.22 μM filter)

¹A dilution range of 1:1000 to 1:10000 is recommended.



Date: 07 NOV 2008

Signature: Signature on File

Title: Technical Manager, BEI Authentication or designee

ATCC[®], on behalf of BEI Resources, hereby represents and warrants that the material provided under this certificate has been subjected by the contractor to the tests and procedures specified and that the results described, along with any other data provided in this certificate, are true and accurate to the best of ATCC[®]'s knowledge.

ATCC[®] is a trademark of the American Type Culture Collection.

You are authorized to use this product for research use only. It is not intended for human use.

