

Genomic DNA from *Escherichia coli*, Strain CFT073

Catalog No. NR-2656

Product Description: Genomic DNA was isolated from a preparation of uropathogenic *Escherichia coli* (UPEC), strain CFT073, serotype O6:H1.

Lot¹: 5107289

Manufacturing Date: 08MAR2006

| TEST | SPECIFICATIONS | RESULTS |
|---|---|--|
| Sequencing of 16S Ribosomal RNA Gene (~ 500 base pairs) | Identical to source organism and GenBank: AE014075 Consistent with <i>Escherichia coli</i> | Identical to source organism and GenBank: AE014075 Consistent with <i>Escherichia coli</i> ² |
| Agarose Gel Electrophoresis | High molecular weight chromosomal DNA | High molecular weight chromosomal DNA (Figure 1) |
| Concentration by PicoGreen[®] Measurement | 4 to 6 µg in 25 to 100 µL per vial | 4.7 µg in 30 µL per vial (159 µg/mL) |
| Functional Activity by PCR Amplification 16S ribosomal RNA gene | ~ 1500 bp amplicon | ~ 1500 bp amplicon |
| OD₂₆₀/OD₂₈₀ Ratio | 1.7 to 1.9 | 1.9 |
| Bacterial Inactivation 10% of total yield plated on Nutrient Agar (BD 213000) and incubated for 7 days at 37°C; limit of detection is 0.1 colony-forming units per vial | No viable bacteria detected | No viable bacteria detected |

¹The bacterial preparation used for extraction of genomic DNA was produced by inoculation of ATCC[®] 700928™ (not NR-2654 as the vial label indicates) into LB Broth (ATCC[®] 60-2100). After incubation for 16 hours at 37°C, genomic DNA was extracted using proprietary technology.

²Also consistent with *Shigella* species.

Date: 01 MAY 2009

Signature: Signature on File

Title: Technical Manager, BEI Authentication or designee

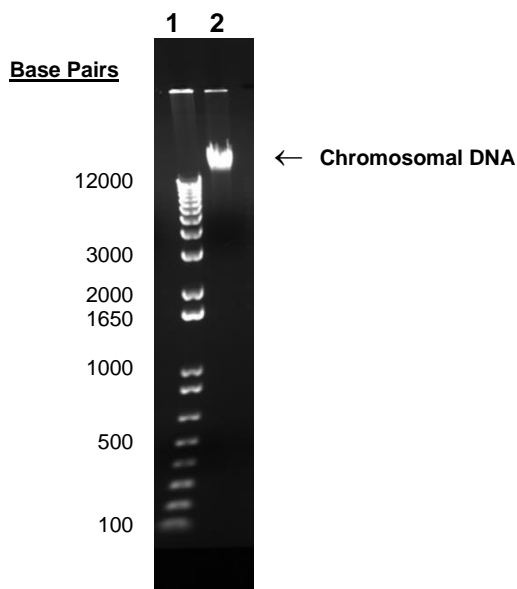
ATCC[®], on behalf of BEI Resources, hereby represents and warrants that the material provided under this certificate has been subjected to the tests and procedures specified and that the results described, along with any other data provided in this certificate, are true and accurate to the best of ATCC[®]'s knowledge.

ATCC[®] is a trademark of the American Type Culture Collection.

You are authorized to use this product for research use only. It is not intended for human use.



Figure 1



Lane 1: Invitrogen™ 1Kb Plus DNA Ladder™
Lane 2: 200 ng of NR-2656