

Genomic DNA from *Clostridium difficile*, Isolate 1

Catalog No. NR-13592

Product Description: Genomic DNA was obtained from a preparation of *Clostridium difficile* (*C. difficile*), isolate 1 which was isolated from a human patient from the Mid-Atlantic region of the United States in 2008/2009.

Lot¹: 58807147

Manufacturing Date: 18JUN2010

TEST	SPECIFICATIONS	RESULTS
Sequencing of 16S Ribosomal RNA Gene (~ 1410 base pairs)	Identical to BEI Resources NR-13427 Consistent with <i>C. difficile</i>	Identical to BEI Resources NR-13427 Consistent with <i>C. difficile</i>
Agarose Gel Electrophoresis	High molecular weight chromosomal DNA	High molecular weight chromosomal DNA (Figure 1)
Concentration by PicoGreen[®] Measurement	0.7 to 1.5 µg in 25 to 100 µL per vial	1.2 µg in 42 µL per vial (28 µg/mL)
Functional Activity by PCR Amplification 16S ribosomal RNA gene	~ 1500 bp amplicon	~ 1500 bp amplicon
OD₂₆₀/OD₂₈₀ Ratio	1.7 to 1.9	1.9
Bacterial Inactivation 10% of total yield plated on Tryptic Soy Agar with 5% defibrinated sheep blood ^{2,3}	No viable bacteria detected	No viable bacteria detected

¹The bacterial preparation used for extraction of genomic DNA was produced by Modified Reinforced Clostridial Broth (ATCC medium 2107) culture of the third passage of the deposited material. After incubation for 48 hours at 37°C in an anaerobic atmosphere (80% N₂:10% CO₂:10% H₂), genomic DNA was extracted using proprietary technology. The deposited material was initially grown in Modified Reinforced Clostridial Broth and incubated for 48 hours at 37°C and anaerobic atmosphere (80% N₂:10% CO₂:10% H₂) and was passaged three times under equivalent conditions.
²7 days at 37°C in an anaerobic atmosphere (80% N₂:10% CO₂:10% H₂)

³An extraction procedure was used that has been shown to consistently inactivate 100% of Gram-negative and Gram-positive bacteria.

Date: 04 MAR 2011

Signature:



Title:

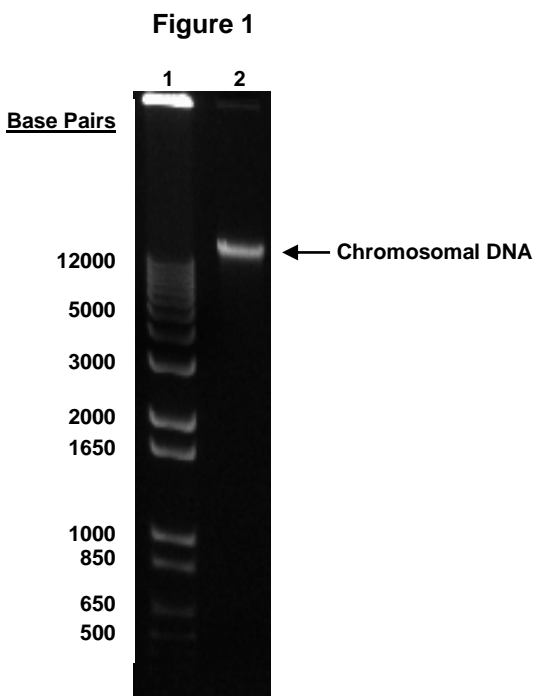
Technical Manager, BEI Authentication or designee

ATCC[®], on behalf of BEI Resources, hereby represents and warrants that the material provided under this certificate has been subjected to the tests and procedures specified and that the results described, along with any other data provided in this certificate, are true and accurate to the best of ATCC[®]'s knowledge.

ATCC[®] is a trademark of the American Type Culture Collection.

You are authorized to use this product for research use only. It is not intended for human use.





Lane 1: Invitrogen™ TrackIt 1 Kb Plus DNA Ladder™
Lane 2: 200 ng of NR-13592