

Plasmid pMRLB.55 Containing Gene Rv3006 (Protein LppZ) from *Mycobacterium tuberculosis* for Expression in *Mycobacterium smegmatis*

Catalog No. NR-13305

This reagent is the tangible property of the U.S. Government.

Product Description: NR-13305 is a recombinant expression vector containing *Mycobacterium tuberculosis* gene Rv3006, which encodes the probable conserved lipoprotein, LppZ. Gene Rv3006 was amplified by PCR and cloned into pVV16 for expression in *Mycobacterium smegmatis*.

Lot: 58755587

Manufacturing Date: 25MAR2010

TEST	SPECIFICATIONS	RESULTS
PCR Amplification and Sequencing of Insert (582 bp)	Insert identical to <i>M. tuberculosis</i> , strain H37Rv gene Rv3006	Insert identical to <i>M. tuberculosis</i> , strain H37Rv gene Rv3006
Agarose Gel Electrophoresis Linearization with <i>Nde</i> I ² Linearization with <i>Hind</i> III ³ Digestion with <i>Nde</i> I and <i>Hind</i> III ^{2,3}	~ 6.904 kb ~ 6.904 kb ~ 1.121 kb (insert); ~ 5.783 kb (vector)	~ 6.904 kb ~ 6.904 kb (Figure 1) ~ 1.121 kb; ~ 5.783 kb (Figure 1)
Concentration by PicoGreen® Measurement	0.7 to 1.5 µg in 25 to 100 µL per vial	0.9 µg in 27 µL per vial (33 µg/mL)
OD₂₆₀/OD₂₈₀ Ratio	1.7 to 2.0	2.0
Effective Bacterial Transformation	≥ 100 colonies per 10 ng	≥ 100 colonies per 10 ng

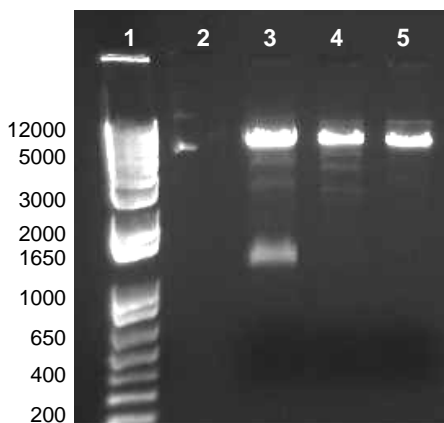
¹Produced in *Escherichia coli* MAX Efficiency® DH5α™ cells (Invitrogen™ 18258-012) and extracted using the Qiagen Plasmid Mega Kit (QIAGEN® 12181)

²*Nde*I (New England BioLabs, Inc. R0111L)

³*Hind*III (New England BioLabs, Inc. R0104M)

Figure 1: Agarose Gel of Undigested and Restriction Enzyme Digested NR-13305.

Lane 1: Invitrogen™ TrackIt 1 Kb Plus DNA Ladder™
Lane 2: Empty
Lane 3: NR-13305 digested with *Nde*I and *Hind*III
Lane 4: NR-13305 digested with *Hind*III
Lane 5: NR-13305 digested with *Nde*I



Date: 07 MAR 2011

Signature:



Title: Technical Manager, BEI Authentication or designee

ATCC[®], on behalf of BEI Resources, hereby represents and warrants that the material provided under this certificate has been subjected by the contractor to the tests and procedures specified and that the results described, along with any other data provided in this certificate, are true and accurate to the best of ATCC[®]'s knowledge.

ATCC[®] is a trademark of the American Type Culture Collection.

You are authorized to use this product for research use only. It is not intended for human use.

