

Genomic DNA from *Escherichia coli*, Strain MS 85-1

Catalog No. HM-337D

Product Description: Genomic DNA was obtained from a preparation of *Escherichia coli* (*E. coli*), strain MS 85-1. *E. coli*, strain MS 85-1 was isolated on February 15, 2002 from the involved ileum of a patient with Crohn's ileitis in New York City, U. S. A.

Lot¹: 59557613

Manufacturing Date: 28DEC2010

TEST	SPECIFICATIONS	RESULTS
Sequencing of 16S Ribosomal RNA Gene (~ 1410 base pairs)	≥ 99% identical to depositor's sequence Consistent with <i>E. coli</i>	≥ 99% identical to depositor's sequence Consistent with <i>E. coli</i> ²
Agarose Gel Electrophoresis	High molecular weight chromosomal DNA	High molecular weight chromosomal DNA (Figure 1)
Concentration by PicoGreen[®] Measurement	0.7 to 1.5 µg in 25 to 100 µL per vial	1.0 µg in 40 µL per vial (26 µg/mL)
Functional Activity by PCR Amplification 16S ribosomal RNA gene	~ 1500 bp amplicon	~ 1500 bp amplicon
OD₂₆₀/OD₂₈₀ Ratio	1.7 to 2.0	1.9
Bacterial Inactivation 10% of total yield plated on Tryptic Soy Agar ^{2,3}	No viable bacteria detected	No viable bacteria detected

¹The bacterial preparation used for extraction of genomic DNA was produced by Tryptic Soy Broth culture of the deposited material. After incubation for 24 hours at 37°C and aerobic atmosphere, genomic DNA was extracted using proprietary technology.

²Also consistent with *Shigella* species

³7 days at 37°C in an aerobic atmosphere

⁴An extraction procedure was used that has been shown to consistently inactivate 100% of Gram-positive and Gram-negative bacteria.

Date: 14 MAR 2011

Signature: 

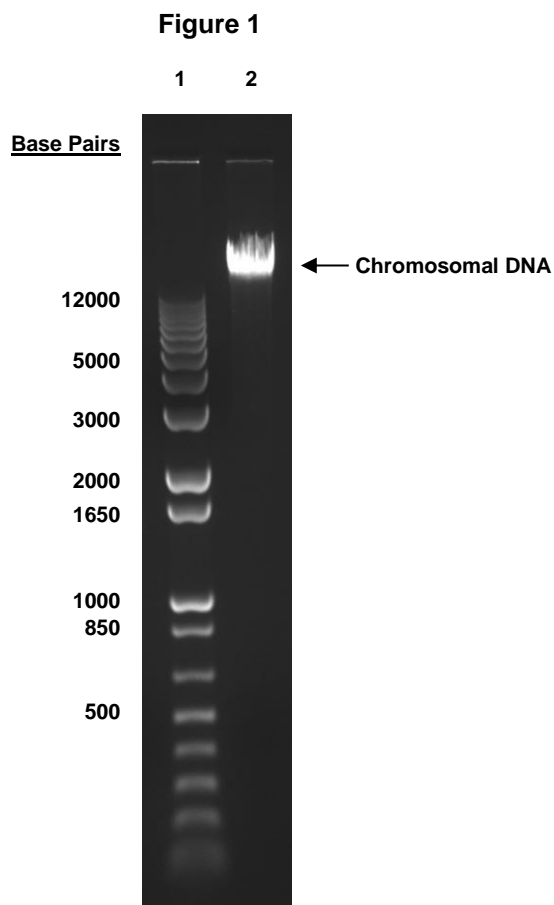
Title: Technical Manager, BEI Authentication or designee

ATCC[®], on behalf of BEI Resources, hereby represents and warrants that the material provided under this certificate has been subjected by ATCC[®] to the tests and procedures specified and that the results described, along with any other data provided in this certificate, are true and accurate to the best of ATCC[®]'s knowledge.

ATCC[®] is a trademark of the American Type Culture Collection.

You are authorized to use this product for research use only. It is not intended for human use.





Lane 1: Invitrogen™ TrackIt 1 Kb Plus DNA Ladder™
Lane 2: 200 ng of HM-337D