

**Vaccinia Virus (WR) A33R Protein with C-terminal Histidine Tag, Recombinant from baculovirus**

**Catalog No. NR-2623**

**Product Description:** NR-2623 is a recombinant form of the A33R membrane glycoprotein (A33Rt; residues 58 to 185, C-terminal histidine-tagged) of the Western Reserve (WR) strain of vaccinia virus. NR-2623 was produced in cabbage looper (*Trichoplusia ni*) insect larvae using a baculovirus expression vector system<sup>1</sup> and was purified using nickel affinity chromatography.

**Lot: 5051774**

**Manufacturing Date: 21FEB2006**

TEST	SPECIFICATIONS	RESULTS
<b>SDS-PAGE (Coomassie Blue densitometer scan)</b>	Dominant band near 17-kDa marker ≥ 95% pure	Dominant band near 17-kDa marker 99% pure (see Figure 1)
<b>Identification by Western Blot</b> Mouse monoclonal antibody to A33R <sup>2</sup> Mouse monoclonal antibodies to L1R <sup>3</sup>	Reactive Not reactive	Reactive (see Figure 2) Not reactive
<b>Demonstration of Protein Glycosylation</b>	Size reduction of protein observed on SDS-PAGE when treated with de-glycosylating enzymes N-glycosidase F	Size reduction of protein observed on SDS-PAGE when treated with de-glycosylating enzyme N-glycosidase F (see Figure 3)
<b>Concentration by Spectrophotometer at OD<sub>280</sub></b>	1.0 mg/mL ± 0.1 mg/mL	1.0 mg/mL
<b>Functional Activity by Western Blot</b>	Reactive with human polyclonal anti-vaccinia virus immune globulin (VIG) <sup>4</sup> and mouse monoclonal antibody to A33R <sup>2</sup>	Reactive with human polyclonal anti-vaccinia virus immune globulin (VIG) <sup>4</sup> and mouse monoclonal antibody to A33R <sup>2</sup>

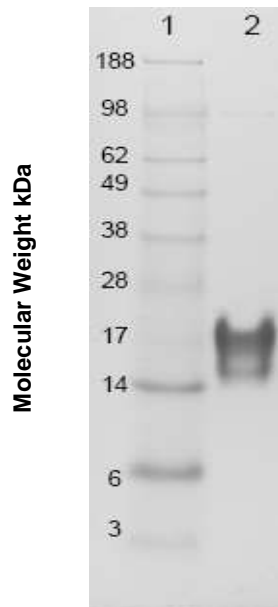
<sup>1</sup>PERLXpress™, Chesapeake Protein Expression and Recovery Labs (PERL).

<sup>2</sup>BEI Resources NR-565.

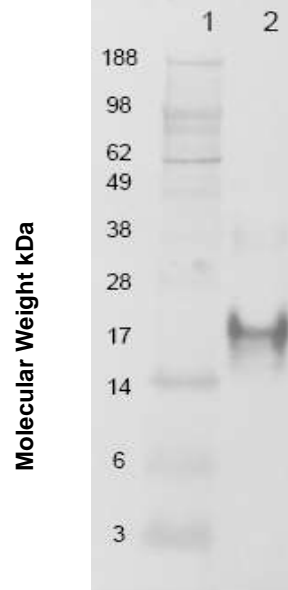
<sup>3</sup>BEI Resources NR-417 to NR-421.

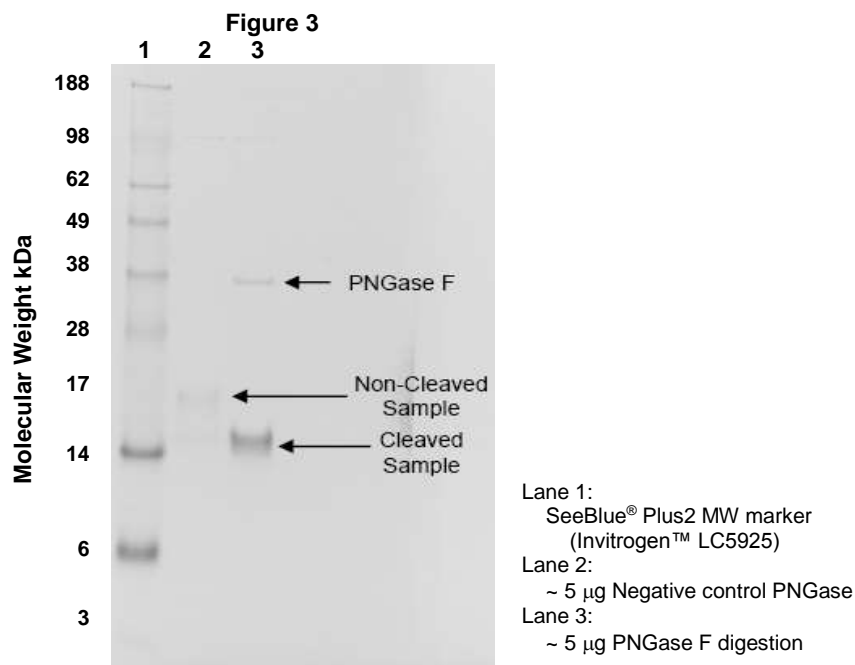
<sup>4</sup>BEI Resources NR-650.

**Figure 1**



**Figure 2**





**D Date:** 15 JUN 2006

**Signature:** Signature on File

**Title:** Technical Manager, BEI Authentication

ATCC®, on behalf of BEI Resources, hereby represents and warrants that the material provided under this certificate has been subjected by the vendor to the tests and procedures specified and that the results described, along with any other data provided in this certificate, are true and accurate to the best of ATCC®'s knowledge.

ATCC® is a trademark of the American Type Culture Collection.

You are authorized to use this product for research use only. It is not intended for human use.

