

***Escherichia coli*, Strain CoGen001577**

**Catalog No. NR-4357**

**Product Description:** *Escherichia coli* (*E. coli*), strain CoGen001577 is an isolate from Illinois that was obtained during the 2006 California spinach outbreak.

**Lot<sup>1</sup>: 58580349**

**Manufacturing Date: 22APR2009**

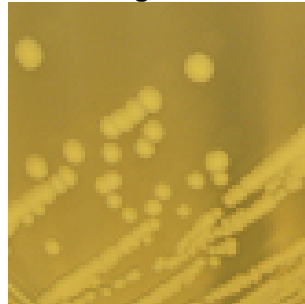
TEST	SPECIFICATIONS	RESULTS
<b>Phenotypic Analysis</b> Cellular morphology Colony morphology <sup>2</sup>  Analytical profile index (API <sup>®</sup> 20 E)	Gram-negative rods Report results  Consistent with <i>E. coli</i>	Gram-negative rods Circular, convex, entire, opaque, cream and glistening (Figure 1) Consistent with <i>E. coli</i>
<b>Genotypic Analysis</b> Sequencing of 16S ribosomal RNA gene (~ 1500 bp)	Consistent with <i>E. coli</i>	Consistent with <i>E. coli</i> <sup>3</sup>
<b>Viability (post-freeze)<sup>2</sup></b>	Growth	Growth

<sup>1</sup>NR-4357 was produced by inoculation of the deposited material into Tryptic Soy Broth and grown 24 hours at 37°C and aerobic atmosphere. Broth inoculum was added to Kolles which were grown 24 hours at 37°C and aerobic atmosphere to produce this lot.

<sup>2</sup>24 hours at 37°C and aerobic atmosphere on Tryptic Soy Agar

<sup>3</sup>Also consistent with *Shigella* species

**Figure 1**



**Date:** 08 APR 2011

**Signature:**

**Title:**

Technical Manager, BEI Authentication or designee

ATCC<sup>®</sup>, on behalf of BEI Resources, hereby represents and warrants that the material provided under this certificate has been subjected to the tests and procedures specified and that the results described, along with any other data provided in this certificate, are true and accurate to the best of ATCC<sup>®</sup>'s knowledge.

ATCC<sup>®</sup> is a trademark of the American Type Culture Collection.

You are authorized to use this product for research use only. It is not intended for human use.

