

**Genomic DNA from *Escherichia coli*, Strain CoGen001577**

**Catalog No. NR-4630**

**Product Description:** Genomic DNA was isolated from a preparation of *Escherichia coli* (*E. coli*), strain CoGen001577, an isolate from Illinois that was obtained during the 2006 California spinach outbreak.

**Lot<sup>1</sup>: 58580370**

**Manufacturing Date: 27APR2009**

| TEST  | SPECIFICATIONS                        | RESULTS  |
|---|---------------------------------------|--|
| <b>Sequencing of 16S Ribosomal RNA Gene</b><br>(~ 1500 base pairs)                            | Consistent with <i>E. coli</i>        | Consistent with <i>E. coli</i> <sup>2</sup>      |
| <b>Agarose Gel Electrophoresis</b>  | High molecular weight chromosomal DNA | High molecular weight chromosomal DNA (Figure 1) |
| <b>Concentration by PicoGreen<sup>®</sup> Measurement</b>                                     | 4 to 6 µg in 25 to 100 µL per vial    | 5.8 µg in 37 µL per vial (156 µg/mL)             |
| <b>Functional Activity by PCR Amplification</b><br>16S ribosomal RNA gene                     | ~ 1500 bp amplicon                    | ~ 1500 bp amplicon                               |
| <b>OD<sub>260</sub>/OD<sub>280</sub> Ratio</b>  | 1.7 to 1.9                            | 1.9  |
| <b>Bacterial Inactivation</b><br>10% of total yield plated on Tryptic Soy Agar <sup>3,4</sup> | No viable bacteria detected           | No viable bacteria detected                      |

<sup>1</sup>The bacterial preparation used for extraction of genomic DNA was produced by Tryptic Soy Broth culture of the deposited material. After incubation for 24 hours at 37°C and aerobic atmosphere, genomic DNA was extracted using proprietary technology.

<sup>2</sup>Also consistent with *Shigella* species

<sup>3</sup>7 days at 37°C in an aerobic atmosphere

<sup>4</sup>An extraction procedure was used that has been shown to consistently inactivate 100% of Gram-negative and Gram-positive bacteria.

**Date:** 13 APR 2011

**Signature:**



**Title:** Technical Manager, BEI Authentication or designee

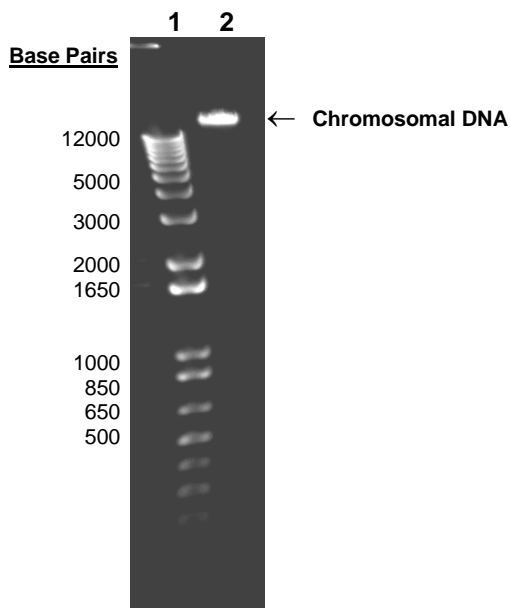
ATCC<sup>®</sup>, on behalf of BEI Resources, hereby represents and warrants that the material provided under this certificate has been subjected to the tests and procedures specified and that the results described, along with any other data provided in this certificate, are true and accurate to the best of ATCC<sup>®</sup>'s knowledge.

ATCC<sup>®</sup> is a trademark of the American Type Culture Collection.

You are authorized to use this product for research use only. It is not intended for human use.



Figure 1



Lane 1: Invitrogen™ 1Kb Plus DNA Ladder™  
Lane 2: 200 ng of NR-4630