

**Lactobacillus iners, Strain UPII 60-B**

**Catalog No. HM-131**

**Product Description:** *Lactobacillus iners* (*L. iners*), strain UPII 60-B was isolated from a human vaginal cavity.

**Lot<sup>1</sup>: 59576254**

**Manufacturing Date: 13DEC2010**

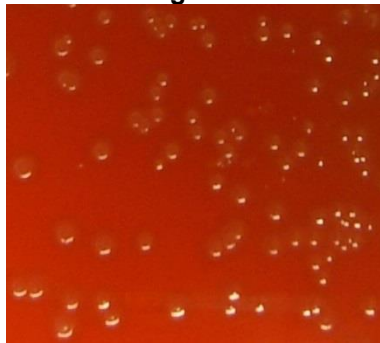
TEST	SPECIFICATIONS	RESULTS
<b>Phenotypic Analysis</b> Cellular morphology <sup>3</sup> Colony morphology <sup>3</sup>	Gram-positive rods Report results	Gram-variable rods <sup>2</sup> Circular, raised, glistening and grey (Figure 1)
<b>Genotypic Analysis</b> Sequencing of 16S ribosomal RNA gene (~ 1440 base pairs)	≥ 99% identical to depositor's sequence Consistent with <i>L. iners</i>	<b>Pending</b> Consistent with <i>L. iners</i>
<b>Viability (post-freeze)<sup>3</sup></b>	Growth	Growth

<sup>1</sup>*L. iners*, strain UPII 60-B was deposited by Sharon L. Hillier, Professor, Department of Obstetrics, Gynecology and Reproductive Sciences, Magee-Womens Research Institute, University of Pittsburgh, Pittsburgh, Pennsylvania. The deposited material was inoculated into NYC III broth ([ATCC medium 1685](#)) and incubated for 72 hours at 37°C in an aerobic atmosphere with 5% CO<sub>2</sub>. Broth inoculum was added to Kolles which were grown 96 hours at 37°C to produce this lot.

<sup>2</sup>*Lactobacillus* species typically stain Gram-positive, but Gram-variable cultures have been isolated.

<sup>3</sup>24 hours at 37°C and 5% CO<sub>2</sub> on Tryptic Soy Agar with 5% sheep blood

**Figure 1**



**Date:** 08 MAR 2011

**Signature:** 

**Title:** Technical Manager, BEI Authentication or designee

ATCC®, on behalf of BEI Resources, hereby represents and warrants that the material provided under this certificate has been subjected by ATCC® to the tests and procedures specified and that the results described, along with any other data provided in this certificate, are true and accurate to the best of ATCC®'s knowledge.

ATCC® is a trademark of the American Type Culture Collection.

You are authorized to use this product for research use only. It is not intended for human use.

