

Lactobacillus sp., Oral Taxon 424, Strain F0435

Catalog No. HM-479

Product Description: *Lactobacillus* sp., oral taxon 424, strain F0435 was isolated from a human oral cavity.

Lot^{1,2}: 59852060

Manufacturing Date: 30MAR2011

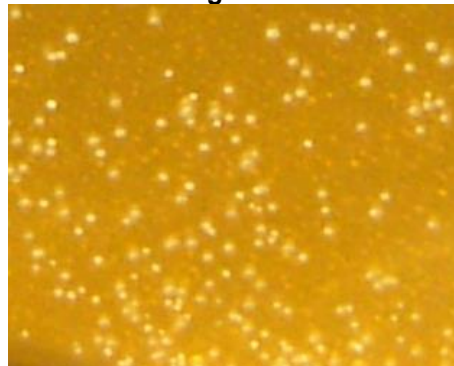
TEST	SPECIFICATIONS	RESULTS
Phenotypic Analysis Cellular morphology Colony morphology ³	Gram-positive rod Report results	Gram-positive rod Translucent and cream-colored (Figure 1)
Genotypic Analysis Sequencing of 16S ribosomal RNA gene (~ 1450 base pairs)	≥ 99% identical to depositor's sequence Consistent with <i>Lactobacillus</i> sp.	Pending Consistent with <i>Lactobacillus</i> sp.
Viability (post-freeze)³	Growth	Growth

¹Quality control of HMP material is only performed to demonstrate that the material distributed by BEI Resources is identical to the deposited material. It should not be considered a complete characterization of the deposited organism.

²*Lactobacillus* sp. oral taxon 424, strain F0435 was deposited by Jacques Izard, Assistant Member of the Staff, Department of Molecular Genetics, The Forsyth Institute, Boston, Massachusetts. The deposited material was inoculated into Lactobacilli MRS Broth and incubated for 72 hours at 37°C in an aerobic atmosphere with 5% CO₂. The material from the initial growth was passaged once in Lactobacilli MRS Broth for 48 hours at 37°C in an aerobic atmosphere with 5% CO₂ to produce this lot.

³24 hours at 37°C in an aerobic atmosphere with 5% CO₂ on Lactobacilli MRS Agar

Figure 1



Date: 08 JUN 2011

Signature:

Title:

Technical Manager, BEI Authentication or designee

ATCC®, on behalf of BEI Resources, hereby represents and warrants that the material provided under this certificate has been subjected by ATCC® to the tests and procedures specified and that the results described, along with any other data provided in this certificate, are true and accurate to the best of ATCC®'s knowledge.

ATCC® is a trademark of the American Type Culture Collection.

You are authorized to use this product for research use only. It is not intended for human use.

