

Staphylococcus aureus, Strain SU-4

Catalog No. NR-13549

Product Description: *Staphylococcus aureus* (*S. aureus*), strain SU-4 was isolated in October 2005 from a Stanford Hospital patient in Palo Alto, California, U.S.A.

Lot¹: 59982823

Manufacturing Date: 13MAY2011

TEST	SPECIFICATIONS	RESULTS
Phenotypic Analysis Cellular morphology Colony morphology ² Oxacillin resistance ³ β-Hemolysis on blood agar Analytical profile index (API Staph®) Catalase	Gram-positive cocci Report results Resistant Report results Consistent with <i>S. aureus</i> Positive	Gram-positive cocci Circular, low convex, entire and beige (Figure 1) Resistant Positive Consistent with <i>S. aureus</i> Positive
Genotypic Analysis Sequencing of 16S ribosomal RNA gene (~ 1390 base pairs) Riboprinter® Microbial Characterization System	Consistent with <i>S. aureus</i> Consistent with <i>S. aureus</i>	Consistent with <i>S. aureus</i> Consistent with <i>S. aureus</i>
Viability (post-freeze)⁴	Growth	Growth

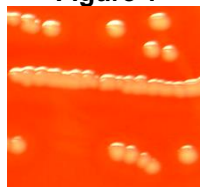
¹*S. aureus*, strain SU-4 was deposited by Kristien Mortelmans, Ph.D., Director, Microbiology Program, Biosciences Division, SRI International, Menlo Park, California. NR-13549 was produced by inoculation of the deposited material into Brain Heart Infusion Broth and grown 24 hours at 37°C. Broth inoculum was added to Kolles which were grown 24 hours at 37°C to produce this lot.

²24 hours at 37°C and aerobic atmosphere on Tryptic Soy Agar with 5% sheep blood

³24 hours at 37°C and aerobic atmosphere on Mueller Hinton Agar containing 6 µg/mL Oxacillin and 4% NaCl (Oxacillin Screen Agar BBL™ 221952)

⁴24 hours at 37°C and aerobic atmosphere on Brain Heart Infusion Agar

Figure 1



Date: 13 JUL 2011

Signature:

Title: Technical Manager, BEI Authentication or designee

ATCC®, on behalf of BEI Resources, hereby represents and warrants that the material provided under this certificate has been subjected by ATCC® to the tests and procedures specified and that the results described, along with any other data provided in this certificate, are true and accurate to the best of ATCC®'s knowledge.

ATCC® is a trademark of the American Type Culture Collection.

You are authorized to use this product for research use only. It is not intended for human use.

