

Salmonella enterica subsp. enterica, Strain LS1054

Catalog No. NR-4346

Product Description: *Salmonella enterica* (*S. enterica*) subsp. *enterica*, strain LS1054 is a derivative of strain 14028 that expresses STM3118, tagged with 3 X FLAG epitopes. STM3118 is proposed to function as an acetyl-CoA hydrolase (Ach) producing acetate, which is commonly used to modify the peptidoglycan layer of the bacterial cell wall to protect bacteria from peptidoglycan degradation enzymes found in macrophages.

Lot¹: 59586821

Manufacturing Date: 01DEC2010

TEST	SPECIFICATIONS	RESULTS
Phenotypic Analysis Cellular morphology Colony morphology ² Analytical profile index (API [®] 20 E) ³	Gram-negative rod Report results Consistent with <i>Salmonella</i> spp.	Gram-negative rod Circular, convex, translucent and cream-colored (Figure 1) Consistent with <i>Salmonella</i> spp.
Genotypic Analysis Sequencing of 16S ribosomal RNA gene (~ 1420 base pairs)	Consistent with <i>S. enterica</i>	Consistent with <i>S. enterica</i>
Serogrouping	Report results	Serogroup B ⁴
Viability (post-freeze)²	Growth	Growth

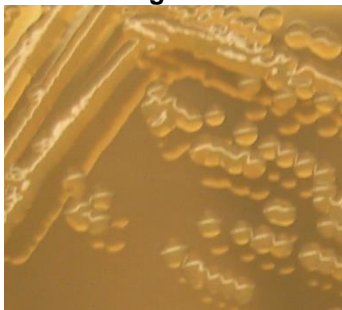
¹NR-4346 was produced by inoculation of the deposited material into Tryptic Soy Broth and grown 24 hours in an aerobic atmosphere. Broth inoculum was added to Kolles which was grown 24 hours at 37°C and aerobic atmosphere to produce this lot.

²24 hours at 37°C and aerobic atmosphere on Tryptic Soy Agar

³Additional serological tests are required to determine *Salmonella* species using API[®] 20 E

⁴Serogroup B contains serotype Typhimurium in addition to other serotypes

Figure 1



Date: 26 JUL 2011

Signature:

Title: Technical Manager, BEI Authentication or designee

ATCC[®], on behalf of BEI Resources, hereby represents and warrants that the material provided under this certificate has been subjected to the tests and procedures specified and that the results described, along with any other data provided in this certificate, are true and accurate to the best of ATCC[®]'s knowledge.

ATCC[®] is a trademark of the American Type Culture Collection.

You are authorized to use this product for research use only. It is not intended for human use.

