

Genomic DNA from *Escherichia coli*, Strain RIMD 0509952

Catalog No. NR-2649

Product Description: Genomic DNA was isolated from a preparation of enterohemorrhagic *Escherichia coli* (EHEC) strain RIMD 0509952, serotype O157:H7. The bacterial preparation was produced by propagation of BEI Resources NR-12.

Lot¹: 7366468

Manufacturing Date: 08MAR2006

TEST	SPECIFICATIONS	RESULTS
Sequencing of 16S Ribosomal RNA Gene (First ~ 500 base pairs)	Identical to GenBank BA000007.2 Consistent with <i>Escherichia coli</i>	Identical to GenBank BA000007.2 Consistent with <i>Escherichia coli</i> ²
Presence of Plasmids Confirmed by PCR Amplification pO157	Confirmed	Confirmed
Agarose Gel Electrophoresis	High molecular weight chromosomal DN A	High molecular weight chromosomal DNA (Figure 1)
Concentration by PicoGreen® Measurement	4 to 6 µg in 25 to 100 µL per vial	5.8 µg in 69 µL per vial (85 µg/mL)
Functional Activity by PCR Amplification 16S ribosomal RNA gene Gene-length DNA from pO157 (<i>hlyA</i> virulence marker) Virulence markers on chromosome ³ <i>stx1</i> <i>stx2</i> <i>eaeA</i>	~ 1500 bp amplicon ~ 3200 bp amplicon ~ 349 bp amplicon ~ 404 bp amplicon ~ 526 bp amplicon	~ 1500 bp amplicon ~ 3200 bp amplicon ~ 349 bp amplicon ~ 404 bp amplicon ~ 526 bp amplicon
OD₂₆₀/OD₂₈₀ Ratio	1.7 to 1.9	1.9
Bacterial Inactivation 10% of total yield plated on Nutrient Agar (BD 213000) and incubated for 7 days at 37°C; limit of detection is 0.2 colony-forming units per vial	No viable bacteria detected	No viable bacteria detected

¹The bacterial preparation used for extraction of genomic DNA was produced by inoculation of BEI Resources NR-12 into LB Broth (ATCC® 602100). After incubation for 16 hours at 37°C, genomic DNA was extracted using proprietary technology.

²Also consistent with *Shigella* species.

³Kimata, K., et al. "Rapid Categorization of Pathogenic *Escherichia coli* by Multiplex PCR." *Microbiol. Immunol.* 49 (2005): 485–492. PubMed: 15965295.

Date: 23 MAY 2006

Signature: Signature on File

Title: Technical Manager, BEI Authentication

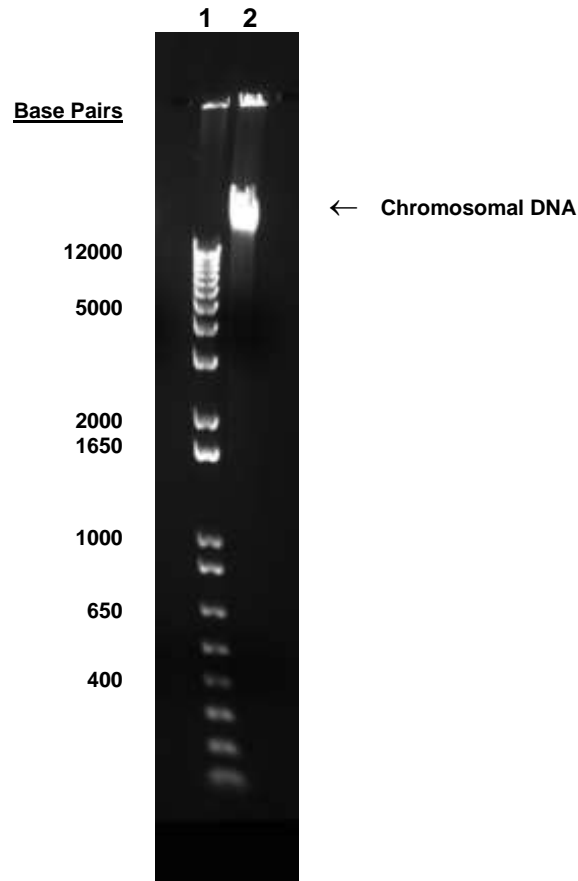
ATCC®, on behalf of BEI Resources, hereby represents and warrants that the material provided under this certificate has been subjected to the tests and procedures specified and that the results described, along with any other data provided in this certificate, are true and accurate to the best of ATCC®'s knowledge.

ATCC® is a trademark of the American Type Culture Collection.

You are authorized to use this product for research use only. It is not intended for human use.



Figure 1



Lane 1: Invitrogen™ 1Kb DNA Ladder™
Lane 2: 200 ng of NR-2649