

Staphylococcus aureus, Strain S247312

Catalog No. NR-13533

Product Description: *Staphylococcus aureus* (*S. aureus*), strain S247312 is a community-associated methicillin resistant *S. aureus* (CA-MRSA) that was isolated in August 2006 from a wound on the abdominal wall of a Stanford Hospital patient in Palo Alto, California, U.S.A.

Lot¹: 59982797

Manufacturing Date: 02JUN2011

TEST	SPECIFICATIONS	RESULTS
Phenotypic Analysis Cellular morphology Colony morphology ² Oxacillin resistance ³ β-Hemolysis on blood agar Analytical profile index (API Staph [®]) ⁴ Catalase	Gram-positive cocci Report results Resistant Report results Consistent with <i>S. aureus</i> Positive	Gram-positive cocci Circular, entire, opaque, glistening and cream (Figure 1) Resistant Positive Consistent with <i>S. aureus</i> Positive
Genotypic Analysis Sequencing of 16S ribosomal RNA gene (~ 1420 base pairs) Riboprinter [®] Microbial Characterization System	Consistent with <i>S. aureus</i> Consistent with <i>S. aureus</i>	Consistent with <i>S. aureus</i> Pending
Viability (post-freeze)²	Growth	Growth

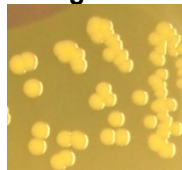
¹*S. aureus*, strain S247312 was deposited by Kristien Mortelmans, Ph.D., Director, Microbiology Program, Biosciences Division, SRI International, Menlo Park, California. NR-13533 was produced by inoculation of the deposited material into Brain Heart Infusion Broth and grown 24 hours at 37°C. Broth inoculum was added to Kolles which were grown 24 hours at 37°C to produce this lot.

²24 hours at 37°C and aerobic atmosphere on Brain Heart Infusion Agar

³24 hours at 37°C and aerobic atmosphere on Mueller Hinton Agar containing 6 µg/mL Oxacillin and 4% NaCl (Oxacillin Screen Agar BBL™ 221952)

⁴The API Staph[®] identification includes a test for Lysostaphin resistance that was not completed for NR-13533. NR-13533 is identified as *S. aureus* by the API Staph[®] test regardless of the Lysostaphin resistance test results.

Figure 1



Date: 25 AUG 2011

Signature:

Title: Technical Manager, BEI Authentication or designee

ATCC[®], on behalf of BEI Resources, hereby represents and warrants that the material provided under this certificate has been subjected by ATCC[®] to the tests and procedures specified and that the results described, along with any other data provided in this certificate, are true and accurate to the best of ATCC[®]'s knowledge.

ATCC[®] is a trademark of the American Type Culture Collection.

You are authorized to use this product for research use only. It is not intended for human use.

