

Staphylococcus aureus, Strain TCH70

Catalog No. HM-139

Product Description: *Staphylococcus aureus* (*S. aureus*), strain TCH70 was isolated from a in Texas.

Lot¹: 58954311

Manufacturing Date: 10DEC2009

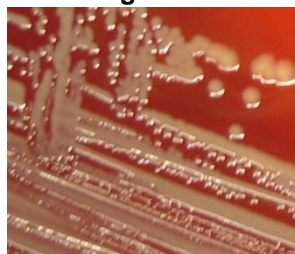
TEST	SPECIFICATIONS	RESULTS
Phenotypic Analysis Cellular morphology Colony morphology ² Oxacillin resistance Hemolysis on blood agar Biochemical Analyses Analytical profile index (API Staph [®]) ³ Catalase	Gram-positive cocci Report results Resistant Report results Consistent with <i>S. aureus</i> Positive	Gram-positive cocci Circular, low convex, entire and white (Figure 1) Resistant Positive Consistent with <i>S. aureus</i> Positive
Genotypic Analysis Sequencing of 16S ribosomal RNA gene (~ 1400 bp)	Consistent with <i>S. aureus</i>	Consistent with <i>S. aureus</i>
Riboprinter[®] Microbial Characterization System	Presumptive identification of <i>S. aureus</i>	Presumptive identification of <i>S. aureus</i>
PCR Assay of Extracted DNA 16S ribosomal RNA gene	~ 1500 bp amplicon	~ 1500 bp amplicon
Viability (post-freeze)²	Growth	Growth

¹*S. aureus*, strain TCH70 was deposited by Sarah K. Highlander, Associate Professor, Department of Molecular Virology and Microbiology, Baylor College of Medicine, Houston, Texas. HM-139 was produced by inoculation of the deposited material into Brain Heart Infusion Broth (BD 237500) and grown 24 hours at 37°C. Broth inoculum was added to Kolles which were grown 24 hours at 37°C to produce this lot.

²24 hours at 37°C and aerobic atmosphere on Tryptic Soy Agar with 5% sheep blood

³The API Staph[®] identification includes a test for Lysostaphin resistance that was not completed for HM-139. HM-139 is identified as *S. aureus* by the API Staph[®] test regardless of the Lysostaphin resistance test results.

Figure 1



Date: 31 AUG 2011

Signature: 

Title: Technical Manager, BEI Authentication or designee

ATCC[®], on behalf of BEI Resources, hereby represents and warrants that the material provided under this certificate has been subjected by ATCC[®] to the tests and procedures specified and that the results described, along with any other data provided in this certificate, are true and accurate to the best of ATCC[®]'s knowledge.

ATCC[®] is a trademark of the American Type Culture Collection.



You are authorized to use this product for research use only. It is not intended for human use.

