

**Staphylococcus aureus, Strain M342506**

**Catalog No. NR-13541**

**Product Description:** *Staphylococcus aureus* (*S. aureus*), strain M342506 is a hospital-acquired methicillin resistant *S. aureus* (HA-MRSA) that was isolated in August 2006 from the culture of a wound abscess of Stanford Hospital patient in Palo Alto, California, U.S.A.

**Lot<sup>1</sup>: 59982805**

**Manufacturing Date: 06MAY2011**

TEST	SPECIFICATIONS	RESULTS
<b>Phenotypic Analysis</b> Cellular morphology Colony morphology <sup>2</sup>  Oxacillin resistance <sup>3</sup> β-Hemolysis on blood agar Analytical profile index (API Staph <sup>®</sup> ) <sup>4</sup> Catalase	Gram-positive cocci Report results  Resistant Report results Consistent with <i>S. aureus</i> Positive	Gram-positive cocci Circular, convex, entire and translucent (Figure 1) Resistant Positive Consistent with <i>S. aureus</i> Positive
<b>Genotypic Analysis</b> Sequencing of 16S ribosomal RNA gene (~ 1390 base pairs) Riboprinter <sup>®</sup> Microbial Characterization System	Consistent with <i>S. aureus</i> Consistent with <i>S. aureus</i>	Consistent with <i>S. aureus</i> Pending
<b>Viability (post-freeze)<sup>2</sup></b>	Growth	Growth

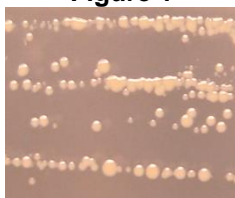
<sup>1</sup>*S. aureus*, strain M342506 was deposited by Kristien Mortelmans, Ph.D., Director, Microbiology Program, Biosciences Division, SRI International, Menlo Park, California. NR-13541 was produced by inoculation of the deposited material into Brain Heart Infusion Broth and grown 24 hours at 37°C. Broth inoculum was added to Kolles which were grown 24 hours at 37°C to produce this lot.

<sup>2</sup>24 hours at 37°C and aerobic atmosphere on Brain Heart Infusion Agar

<sup>3</sup>24 hours at 37°C and aerobic atmosphere on Mueller Hinton Agar containing 6 µg/mL Oxacillin and 4% NaCl (Oxacillin Screen Agar BBL™ 221952)

<sup>4</sup>The API Staph<sup>®</sup> identification includes a test for Lysostaphin resistance that was not completed for NR-13541. NR-13541 is identified as *S. aureus* by the API Staph<sup>®</sup> test regardless of the Lysostaphin resistance test results.

**Figure 1**



**Date:** 14 SEP 2011

**Signature:**

**Title:** Technical Manager, BEI Authentication or designee

ATCC<sup>®</sup>, on behalf of BEI Resources, hereby represents and warrants that the material provided under this certificate has been subjected to the tests and procedures specified and that the results described, along with any other data provided in this certificate, are true and accurate to the best of ATCC<sup>®</sup>'s knowledge.

ATCC<sup>®</sup> is a trademark of the American Type Culture Collection. You are authorized to use this product for research use only. It is not intended for human use.

