

Staphylococcus aureus, Strain SU-1

Catalog No. NR-13546

Product Description: *Staphylococcus aureus* (*S. aureus*), strain SU-1 is a community-associated methicillin resistant *S. aureus* (CA-MRSA) that was isolated in October 2005 from a Stanford Hospital patient in Palo Alto, California, U.S.A.

Lot¹: 59982810

Manufacturing Date: 12MAY2011

TEST	SPECIFICATIONS	RESULTS
Phenotypic Analysis Cellular morphology Colony morphology ² Oxacillin resistance ³ β-Hemolysis on blood agar Analytical profile index (API Staph [®]) ⁴ Catalase	Gram-positive cocci Report results Resistant Report results Consistent with <i>S. aureus</i> Positive	Gram-positive cocci Circular, convex, entire and translucent (Figure 1) Resistant Positive Consistent with <i>S. aureus</i> Positive
Genotypic Analysis Sequencing of 16S ribosomal RNA gene (~ 1400 base pairs) Riboprinter [®] Microbial Characterization System	Consistent with <i>S. aureus</i> Consistent with <i>S. aureus</i>	Consistent with <i>S. aureus</i> Pending
Viability (post-freeze)²	Growth	Growth

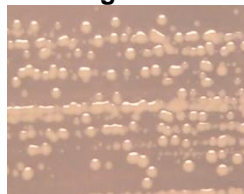
¹*S. aureus*, strain SU-1 was deposited by Kristien Mortelmans, Ph.D., Director, Microbiology Program, Biosciences Division, SRI International, Menlo Park, California. NR-13546 was produced by inoculation of the deposited material into Brain Heart Infusion Broth and grown 24 hours at 37°C. Broth inoculum was added to Kolles which were grown 24 hours at 37°C to produce this lot.

²24 hours at 37°C and aerobic atmosphere on Brain Heart Infusion Agar

³24 hours at 37°C and aerobic atmosphere on Mueller Hinton Agar containing 6 µg/mL Oxacillin and 4% NaCl (Oxacillin Screen Agar BBL™ 221952)

⁴The API Staph[®] identification includes a test for Lysostaphin resistance that was not completed for NR-13546. NR-13546 is identified as *S. aureus* by the API Staph[®] test regardless of the Lysostaphin resistance test results.

Figure 1



Date: 14 SEP 2011

Signature:

Title: Technical Manager, BEI Authentication or designee

ATCC[®], on behalf of BEI Resources, hereby represents and warrants that the material provided under this certificate has been subjected to the tests and procedures specified and that the results described, along with any other data provided in this certificate, are true and accurate to the best of ATCC[®]'s knowledge.

ATCC[®] is a trademark of the American Type Culture Collection.

You are authorized to use this product for research use only. It is not intended for human use.

