

Certificate of Analysis for HM-201

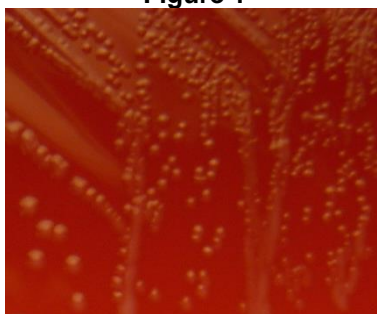
Enterococcus faecalis*, Strain TX0104*Catalog No. HM-201****Product Description:** *Enterococcus faecalis* (*E. faecalis*), strain TX0104 was isolated in January, 2002 from the blood of an endocarditis patient at Stamford Hospital in Connecticut.**Lot^{1,2}: 59994662****Manufacturing Date: 08JUL2011**

TEST	SPECIFICATIONS	RESULTS
Phenotypic Analysis Cellular morphology Colony morphology ³ Hemolysis on blood agar ³	Gram-positive cocci Report results Report results	Gram-positive cocci Circular, entire, low convex and gray (Figure 1) γ-hemolytic
Genotypic Analysis Sequencing of 16S ribosomal RNA gene (~ 1420 base pairs)	≥ 99% identical to depositor's sequence Consistent with <i>E. faecalis</i>	Pending Consistent with <i>E. faecalis</i>
Viability (post-freeze)³	Growth	Growth

¹Quality control of HMP material is only performed to demonstrate that the material distributed by BEI Resources is identical to the deposited material. It should not be considered a complete characterization of the deposited organism.

²*E. faecalis*, strain TX0104 was deposited by Professor Barbara E. Murray, M.D., Director, Division of Infectious Diseases, Department of Internal Medicine, The University of Texas Health Science Center at Houston, Houston, Texas. The deposited material was inoculated into Brain Heart Infusion broth and incubated for 24 hours at 37°C in an aerobic atmosphere. Broth inoculum was added to Kolles which were grown 24 hours at 37°C to produce this lot.

³24 hours at 37°C in an aerobic atmosphere on Tryptic Soy Agar with 5% defibrinated sheep blood

Figure 1**Date:** 24 OCT 2011**Signature:****Title:**

Technical Manager, BEI Authentication or designee

ATCC®, on behalf of BEI Resources, hereby represents and warrants that the material provided under this certificate has been subjected by ATCC® to the tests and procedures specified and that the results described, along with any other data provided in this certificate, are true and accurate to the best of ATCC®'s knowledge.

ATCC® is a trademark of the American Type Culture Collection.

You are authorized to use this product for research use only. It is not intended for human use.

