

Genomic DNA from *Klebsiella pneumoniae*, Isolate 1

Catalog No. NR-15464

Product Description: Genomic DNA was obtained from a preparation of *Klebsiella pneumoniae* (*K. pneumoniae*), isolate 1.

Lot¹: 58855095

Manufacturing Date: 20OCT2010

TEST	SPECIFICATIONS	RESULTS
Sequencing of 16S Ribosomal RNA Gene (~ 690 bp)	Consistent with <i>K. pneumoniae</i>	Consistent with <i>K. pneumoniae</i>
Agarose Gel Electrophoresis	High molecular weight chromosomal DNA	High molecular weight chromosomal DNA (Figure 1)
Concentration by PicoGreen[®] Measurement	0.7 to 1.5 µg in 25 to 100 µL per vial	1.2 µg in 100 µL per vial (12 µg/mL)
Functional Activity by PCR Amplification 16S ribosomal RNA gene Presence of β-lactamase (<i>bla_{KPC}</i>) gene ²	~ 1500 bp amplicon ~ 1000 bp amplicon	~ 1500 bp amplicon ~ 1000 bp amplicon
OD₂₆₀/OD₂₈₀ Ratio	1.7 to 2.0	1.9
Bacterial Inactivation 10% of total yield plated on Tryptic Soy Agar with 5% sheep blood ^{3,4}	No viable bacteria detected	No viable bacteria detected

¹The bacterial preparation used for extraction of genomic DNA was produced by Tryptic Soy Broth culture of the deposited material. After incubation for 24 hours at 37°C and aerobic atmosphere, genomic DNA was extracted using proprietary technology.

²Yigit, H. et al. "Novel Carbapenem-Hydrolyzing β-Lactamase, KPC-1, from a Carbapenem-Resistant Strain of *Klebsiella pneumoniae*." *Antimicrob. Agents Chemother.* 45 (2001): 1151-1161. PubMed: 11257029.

³7 days at 37°C in an aerobic atmosphere

⁴An extraction procedure was used that has been shown to consistently inactivate 100% of Gram-negative and Gram-positive bacteria.

Date: 09 NOV 2011

Signature: 

Title: Technical Manager, BEI Authentication or designee

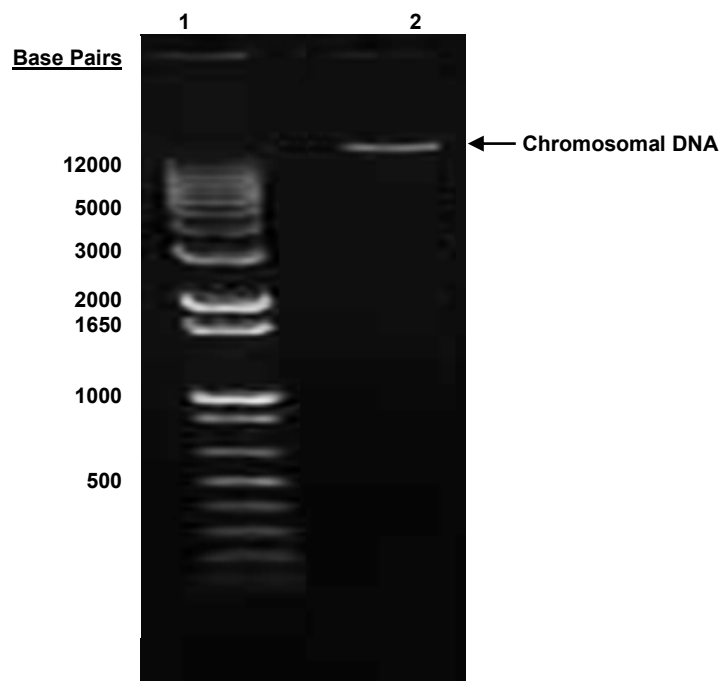
ATCC[®], on behalf of BEI Resources, hereby represents and warrants that the material provided under this certificate has been subjected to the tests and procedures specified and that the results described, along with any other data provided in this certificate, are true and accurate to the best of ATCC[®]'s knowledge.

ATCC[®] is a trademark of the American Type Culture Collection.

You are authorized to use this product for research use only. It is not intended for human use.



Figure 1



Lane 1: Invitrogen™ TrackIt 1 Kb Plus DNA Ladder™
Lane 2: 200 ng of NR-15464