

***Clostridium orbiscindens*, Strain 1_3_50AFAA**

Catalog No. HM-303

Product Description: *Clostridium orbiscindens* (*C. orbiscindens*), strain 1_3_50AFAA was isolated from healthy tissue taken from the descending colon of a 19-year-old female with Crohn's disease.

Lot^{1,2}: 60096267

Manufacturing Date: 18JUL2011

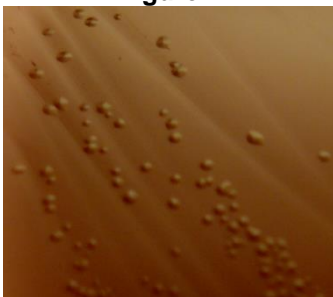
TEST	SPECIFICATIONS	RESULTS
Phenotypic Analysis Cellular morphology Colony morphology ³	Gram-variable rod Report results	Gram-variable rod Circular, flat, entire and gray (Figure 1)
Genotypic Analysis Sequencing of 16S ribosomal RNA gene (~ 1380 base pairs)	≥ 99% identical to depositor's sequence Consistent with <i>C. orbiscindens</i>	≥ 99% identical to depositor's sequence Consistent with <i>C. orbiscindens</i>
Viability (post-freeze)³	Growth	Growth

¹Quality control of HMP material is only performed to demonstrate that the material distributed by BEI Resources is identical to the deposited material. It should not be considered a complete characterization of the deposited organism.

²*C. orbiscindens*, strain 1_3_50AFAA was deposited by Emma Allen-Vercoe, Department of Molecular and Cellular Biology, University of Guelph, Guelph, Ontario, Canada. The deposited material was inoculated into Modified Chopped Meat Medium ([ATCC medium 1490](#)) and incubated for 48 hours at 37°C and anaerobic atmosphere (80% N₂:10% CO₂:10% H₂). The material from the initial growth was passaged once in Modified Chopped Meat Medium for 72 hours at 37°C and anaerobic atmosphere to produce this lot.

³48 hours at 37°C and anaerobic atmosphere on Tryptic Soy Agar with 5% defibrinated sheep blood

Figure 1



Date: 24 OCT 2011

Signature:

Title: Technical Manager, BEI Authentication or designee

ATCC®, on behalf of BEI Resources, hereby represents and warrants that the material provided under this certificate has been subjected by ATCC® to the tests and procedures specified and that the results described, along with any other data provided in this certificate, are true and accurate to the best of ATCC®'s knowledge.

ATCC® is a trademark of the American Type Culture Collection.

You are authorized to use this product for research use only. It is not intended for human use.

