

Genomic DNA from *Campylobacter jejuni* subsp. *jejuni*, Strain D3043

Catalog No. NR-3058

Product Description: Genomic DNA was isolated from a preparation of *Campylobacter jejuni* (*C. jejuni*) subsp. *jejuni*, strain D3043.

Lot¹: 59670689

Manufacturing Date: 28FEB2011

| TEST | SPECIFICATIONS | RESULTS |
|--|--|--|
| Sequencing of 16S Ribosomal RNA Gene (~ 1400 base pairs) | Consistent with <i>C. jejuni</i> | Consistent with <i>C. jejuni</i> ² |
| Agarose Gel Electrophoresis | High molecular weight chromosomal DNA | High molecular weight chromosomal DNA (Figure 1) |
| Concentration by PicoGreen[®] Measurement | 0.7 to 1.5 µg in 25 to 100 µL per vial | 0.8 µg in 35 µL per vial (22 µg/mL) |
| Functional Activity by PCR Amplification 16S ribosomal RNA gene | ~ 1500 bp amplicon | ~ 1500 bp amplicon |
| OD₂₆₀/OD₂₈₀ Ratio | 1.7 to 2.0 | 1.9 |
| Bacterial Inactivation 10% of total yield plated on Tryptic Soy Agar with 5% defibrinated sheep blood ^{3,4} | No viable bacteria detected | No viable bacteria detected |

¹The bacterial preparation used for extraction of genomic DNA was produced by broth inoculation of BEI Resources NR-400 (Lot 7642593). After incubation for 48 hours at 37°C in a microaerophilic (3-5% O₂ and 5% CO₂) atmosphere, genomic DNA was extracted using proprietary technology.

²Also consistent with *Campylobacter coli*

³7 days at 37°C and microaerophilic (3 to 5% O₂ and 5% CO₂) atmosphere

⁴An extraction procedure was used that has been shown to consistently inactivate 100% of Gram-positive and Gram-negative bacteria.

Date: 10 NOV 2011

Signature:



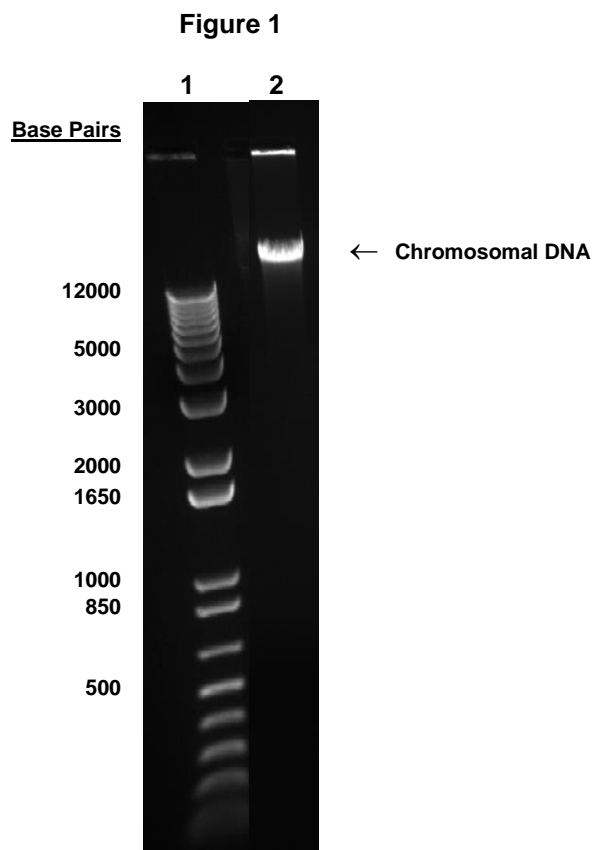
Title: Technical Manager, BEI Authentication or designee

ATCC[®], on behalf of BEI Resources, hereby represents and warrants that the material provided under this certificate has been subjected by ATCC[®] to the tests and procedures specified and that the results described, along with any other data provided in this certificate, are true and accurate to the best of ATCC[®]'s knowledge.

ATCC[®] is a trademark of the American Type Culture Collection.

You are authorized to use this product for research use only. It is not intended for human use.





Lane 1: Invitrogen™ 1Kb Plus DNA Ladder™
Lane 2: 200 ng of NR-3058