

**Prevotella amnii, Strain CRIS 21A-A**

**Catalog No. HM-138**

**Product Description:** *Prevotella amnii* (*P. amnii*), strain CRIS 21A-A was isolated from human amniotic fluid.

**Lot<sup>1-3</sup>: 59979678**

**Manufacturing Date: 12JUN2011**

TEST	SPECIFICATIONS	RESULTS
<b>Phenotypic Analysis</b> Cellular morphology Colony morphology <sup>4</sup>	Report results Report results	Gram-negative rods Circular, convex and entire (Figure 1)
<b>Genotypic Analysis</b> Sequencing of 16S ribosomal RNA gene (1025 base pairs)	≥ 99% identical to ADFQ01000002.1 <i>P. amnii</i> , strain CRIS 21A-A	≥ 99% identical to ADFQ01000002.1 <i>P. amnii</i> , strain CRIS 21A-A
<b>Viability (post-freeze)<sup>4</sup></b>	Growth	Growth

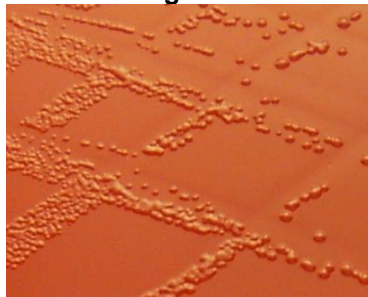
<sup>1</sup>Quality control of HMP material is only performed to demonstrate that the material distributed by BEI Resources is identical to the deposited material. It should not be considered a complete characterization of the deposited organism.

<sup>2</sup>*P. amnii*, strain CRIS 21A-A was deposited by Sharon L. Hillier, Professor, Department of Obstetrics, Gynecology and Reproductive Sciences, Magee-Womens Research Institute, University of Pittsburgh, Pittsburgh, Pennsylvania. The deposited material was inoculated onto Tryptic Soy Agar (TSA) with 5% defibrinated sheep blood and incubated for 48 hours at 37°C in an anaerobic atmosphere (80% N<sub>2</sub>:10% CO<sub>2</sub>:10% H<sub>2</sub>). The material from the initial growth was passaged on a TSA with 5% defibrinated sheep blood slant and incubated for 96 hours at 37°C in an anaerobic atmosphere. The material from the second growth was added to Kolles which were grown 48 hours at 37°C in an anaerobic atmosphere to produce this lot.

<sup>3</sup>No growth was observed in Modified Chopped Meat Medium broth cultures after 48 hours under incubation conditions.

<sup>4</sup>48 hours at 37°C in an anaerobic atmosphere on TSA with 5% defibrinated sheep blood

**Figure 1**



**Date:** 20 DEC 2011

**Signature:**

**Title:**

Technical Manager, BEI Authentication or designee

ATCC®, on behalf of BEI Resources, hereby represents and warrants that the material provided under this certificate has been subjected by ATCC® to the tests and procedures specified and that the results described, along with any other data provided in this certificate, are true and accurate to the best of ATCC®'s knowledge.

ATCC® is a trademark of the American Type Culture Collection.

You are authorized to use this product for research use only. It is not intended for human use.

