

***Clostridium hathewayi*, Strain WAL-18680**

Catalog No. HM-308

Product Description: *Clostridium hathewayi* (*C. hathewayi*), strain WAL-18680 was isolated from the stool of an autistic male child.

Lot^{1,2}: 60096269

Manufacturing Date: 05AUG2011

TEST	SPECIFICATIONS	RESULTS
Phenotypic Analysis Cellular morphology ³ Colony morphology ⁴	Report results Report results	Gram-negative rod Circular, low convex, entire and gray (Figure 1)
Genotypic Analysis Sequencing of 16S ribosomal RNA gene (~ 1390 base pairs)	≥ 99% identical to GenBank: ADLN01000129 (<i>C. hathewayi</i> , strain WAL-18680)	≥ 99% identical to GenBank: ADLN01000129 (<i>C. hathewayi</i> , strain WAL-18680)
Viability (post-freeze)⁴	Growth	Growth

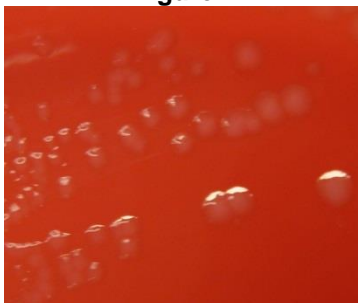
¹Quality control of HMP material is only performed to demonstrate that the material distributed by BEI Resources is identical to the deposited material. It should not be considered a complete characterization of the deposited organism.

²*C. hathewayi*, strain WAL-18680 was deposited by Emma Allen-Vercoe, Department of Molecular and Cellular Biology, University of Guelph, Guelph, Ontario, Canada. The deposited material was inoculated into Modified Reinforced Clostridial Broth (ATCC medium 2107) and incubated for 48 hours at 37°C and anaerobic atmosphere (80% N₂:10% CO₂:10% H₂). The material from the initial growth was passaged once in Modified Chopped Meat Medium for 48 hours at 37°C and anaerobic atmosphere to produce this lot.

³*C. hathewayi* is characterized as Gram-positive organism. However, in cultures of *Clostridium*, a decrease in peptidoglycan thickness occurs during growth, and aged cultures may stain Gram-negative or Gram-variable (Beveridge, T. J. "Mechanism of Gram Variability in Select Bacteria." *J. Bacteriol.* 172 (1990): 1609-1620. PubMed: 1689718).

⁴48 hours at 37°C and anaerobic atmosphere on Tryptic Soy Agar with 5% defibrinated sheep blood

Figure 1



Date: 09 JAN 2012

Signature:

Title:

Technical Manager, BEI Authentication or designee

ATCC®, on behalf of BEI Resources, hereby represents and warrants that the material provided under this certificate has been subjected by ATCC® to the tests and procedures specified and that the results described, along with any other data provided in this certificate, are true and accurate to the best of ATCC®'s knowledge.

ATCC® is a trademark of the American Type Culture Collection.

You are authorized to use this product for research use only. It is not intended for human use.

