

Escherichia coli, Strain 83972

Catalog No. HM-50

Product Description: *Escherichia coli* (*E. coli*), strain 83972 was isolated from the urine of a young girl with a three-year history of asymptomatic bacteriuria with stable renal function in Gothenburg, Sweden.

Lot^{1,2}: 60096272

Manufacturing Date: 14JUL2011

TEST	SPECIFICATIONS	RESULTS
Phenotypic Analysis Cellular morphology Colony morphologies ^{3,4}	Report results Report results	Gram-negative rod Colony type 1: Circular, convex, entire and cream (Figure 1) Colony type 2: Circular, cream and pinpoint (Figure 1)
Genotypic Analysis Sequencing of 16S ribosomal RNA gene (~ 1360 base pairs)	≥ 99% identical to GenBank: CP001671 (<i>E. coli</i> , strain 83972)	≥ 99% identical to GenBank: CP001671 (<i>E. coli</i> , strain 83972)
Viability (post-freeze)³	Growth	Growth

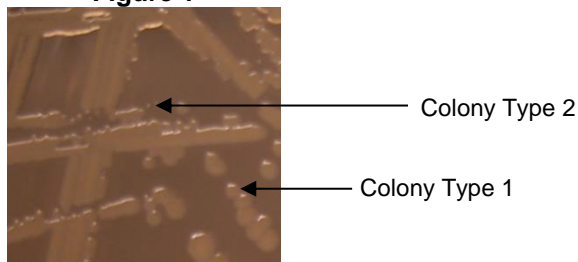
¹Quality control of HMP material is only performed to demonstrate that the material distributed by BEI Resources is identical to the deposited material. It should not be considered a complete characterization of the deposited organism.

²*E. coli*, strain 83972 was deposited by Richard Hull, Ph.D., Consultant for the Department of Molecular Virology and Microbiology, Baylor College of Medicine, Houston, Texas. The deposited material was inoculated into Tryptic Soy Broth and incubated for 24 hours at 37°C in an aerobic atmosphere. The material from the initial growth was added to Kolles for 24 hours at 37°C in an aerobic atmosphere to produce this lot.

³24 hours at 37°C in an aerobic atmosphere on Tryptic Soy Agar

⁴Two colony types were observed. Plating of the individual colony types showed that they reverted to the mixed colony type. The 16S ribosomal RNA gene of each colony type was sequenced and found to be consistent with the other colony type.

Figure 1



Date: 09 JAN 2012

Signature:

Title: Technical Manager, BEI Authentication or designee

ATCC®, on behalf of BEI Resources, hereby represents and warrants that the material provided under this certificate has been subjected by ATCC® to the tests and procedures specified and that the results described, along with any other data provided in this certificate, are true and accurate to the best of ATCC®'s knowledge.

ATCC® is a trademark of the American Type Culture Collection.

You are authorized to use this product for research use only. It is not intended for human use.

