

**Citrobacter sp., Strain 30\_2**

**Catalog No. HM-34**

**Product Description:** *Citrobacter* sp., strain 30\_2 was isolated from an inflamed terminal ileum biopsy specimen taken from a 23-year-old female patient with active Crohn's disease in Calgary, Alberta, Canada.

**Lot<sup>1,2</sup>: 60190284**

**Manufacturing Date: 19AUG2011**

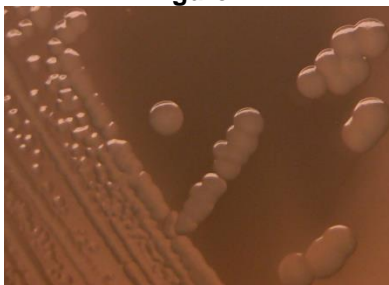
TEST	SPECIFICATIONS	RESULTS
<b>Phenotypic Analysis</b> Cellular morphology Colony morphology <sup>3</sup>	Gram-negative rod Report results	Gram-negative rod Circular, entire, glistening and white (Figure 1)
<b>Genotypic Analysis</b> Sequencing of 16S ribosomal RNA gene (~ 940 base pairs)	≥ 99% identical to GenBank: NZ_GG657375.1 ( <i>Citrobacter</i> sp., strain 30_2)	≥ 99% identical to GenBank: NZ_GG657375.1 ( <i>Citrobacter</i> sp., strain 30_2)
<b>Viability (post-freeze)<sup>3</sup></b>	Growth	Growth

<sup>1</sup>Quality control of HMP material is only performed to demonstrate that the material distributed by BEI Resources is identical to the deposited material. It should not be considered a complete characterization of the deposited organism.

<sup>2</sup>*Citrobacter* sp., strain 30\_2 was deposited by Professor Emma Allen-Vercoe, Department of Molecular and Cellular Biology, University of Guelph, Guelph, Ontario, Canada. HM-34 was produced by inoculation of the deposited material into Tryptic Soy Broth and incubated for 24 hours at 37°C in an aerobic atmosphere. Broth was then added to Kolles and incubated for 24 hours at 37°C in an aerobic atmosphere to produce this lot.

<sup>3</sup>24 hours at 37°C in an aerobic atmosphere on Nutrient Agar

**Figure 1**



**Date:** 23 JAN 2012

**Signature:**

**Title:** Technical Manager, BEI Authentication or designee

ATCC®, on behalf of BEI Resources, hereby represents and warrants that the material provided under this certificate has been subjected to the tests and procedures specified and that the results described, along with any other data provided in this certificate, are true and accurate to the best of ATCC®'s knowledge.

ATCC® is a trademark of the American Type Culture Collection. You are authorized to use this product for research use only. It is not intended for human use.

