

Genomic DNA from *Gemella morbillorum*, Strain M424

Catalog No. HM-240D

Product Description: Genomic DNA was obtained from a preparation of *Gemella morbillorum* (*G. morbillorum*), strain M424.

Lot^{1,2}: 60265337

Manufacturing Date: 27SEP2011

| TEST | SPECIFICATIONS | RESULTS |
|--|---|---|
| Sequencing of 16S Ribosomal RNA Gene (1510 base pairs) | ≥ 99% identical to GenBank: ACRX01000010 (<i>G. morbillorum</i> , strain M424) | ≥ 99% identical to GenBank: ACRX01000010 (<i>G. morbillorum</i> , strain M424) |
| Agarose Gel Electrophoresis | High molecular weight chromosomal DNA | High molecular weight chromosomal DNA (Figure 1) |
| Concentration by PicoGreen[®] Measurement | 0.7 to 1.5 µg in 25 to 100 µL per vial | 1.0 µg in 67 µL per vial (15 µg/mL) |
| Functional Activity by PCR Amplification 16S ribosomal RNA gene | ~ 1500 bp amplicon | ~ 1500 bp amplicon |
| OD₂₆₀/OD₂₈₀ Ratio | 1.7 to 2.0 | 1.8 |
| Bacterial Inactivation 10% of total yield plated on Tryptic Soy Agar with 5% defibrinated sheep blood ^{3,4} | No viable bacteria detected | No viable bacteria detected |

¹Quality control of HMP organisms used for DNA extraction is only performed to demonstrate that the material produced by BEI Resources is identical to the deposited material. It should not be considered a complete characterization of the deposited organism.

²The bacterial preparation used for extraction of genomic DNA was produced by Brain Heart Infusion Broth culture of HM-240, lot 59925946. After incubation for 48 hours at 37°C and aerobic atmosphere with 5% CO₂, genomic DNA was extracted using proprietary technology.

³7 days at 37°C and aerobic atmosphere with 5% CO₂

⁴An extraction procedure was used that has been shown to consistently inactivate 100% of Gram-positive and Gram-negative bacteria.

Date: 30 JAN 2012

Signature:



Title:

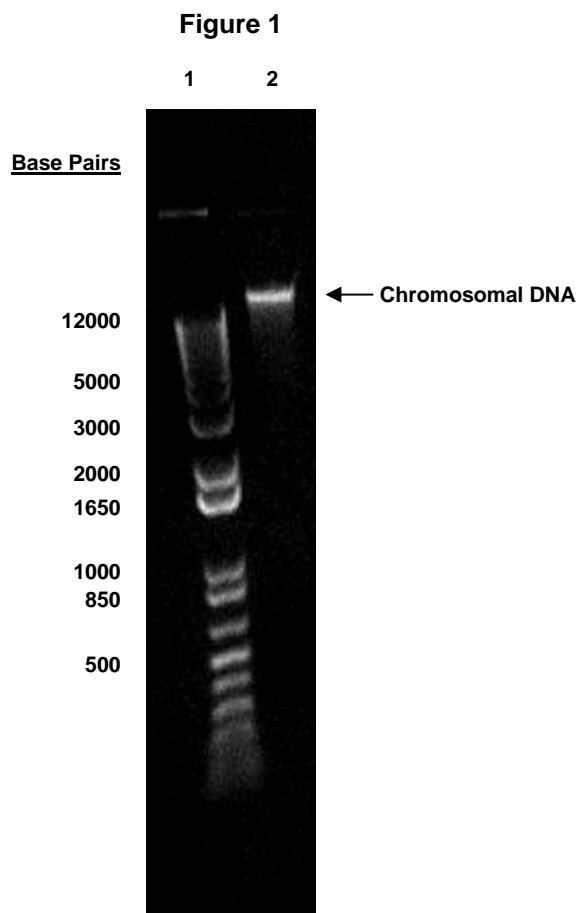
Technical Manager, BEI Authentication or designee

ATCC[®], on behalf of BEI Resources, hereby represents and warrants that the material provided under this certificate has been subjected by ATCC[®] to the tests and procedures specified and that the results described, along with any other data provided in this certificate, are true and accurate to the best of ATCC[®]'s knowledge.

ATCC[®] is a trademark of the American Type Culture Collection.

You are authorized to use this product for research use only. It is not intended for human use.





Lane 1: Invitrogen™ TrackIt 1 Kb Plus DNA Ladder™
Lane 2: 200 ng of HM-240D