

Certificate of Analysis for HM-222

Bacteroides ovatus, Strain 3_8_47FAA

Catalog No. HM-222

Product Description: *Bacteroides ovatus* (*B. ovatus*), strain 3_8_47FAA was isolated from inflamed biopsy tissue taken from the sigmoid colon of a 25-year-old female patient with Crohn's disease.

Lot^{1,2}: 59994665

Manufacturing Date: 02OCT2011

| TEST | SPECIFICATIONS | RESULTS |
|---|--|--|
| Phenotypic Analysis Cellular morphology Colony morphology ^{3,4} | Report results Report results | Gram-negative rod Circular, convex and entire (Figure 1) |
| Genotypic Analysis Sequencing of 16S ribosomal RNA gene (~ 1420 base pairs) | ≥ 99% identical to GenBank ACWH01000036 (<i>B. ovatus</i> , strain 3_8_47FAA) | ≥ 99% identical to GenBank ACWH01000036 (<i>B. ovatus</i> , strain 3_8_47FAA) |
| Viability (post-freeze) ³ | Growth | Growth |

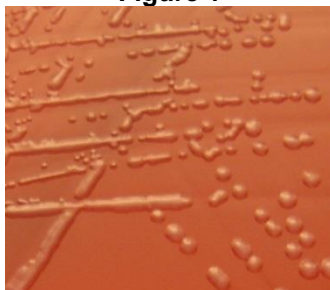
¹Quality control of HMP material is only performed to demonstrate that the material distributed by BEI Resources is identical to the deposited material. It should not be considered a complete characterization of the deposited organism.

²*B. ovatus*, strain 3_8_47FAA was deposited by Professor Emma Allen-Vercoe, Department of Molecular and Cellular Biology, University of Guelph, Guelph, Ontario, Canada. HM-222 was produced by inoculation of the deposited material into Modified Chopped Meat Medium ([ATCC medium 1490](#)) and incubated for 48 hours at 37°C and anaerobic atmosphere (80% N₂:10% CO₂:10% H₂). The material from the initial growth was passaged once in Modified Chopped Meat Medium for 48 hours at 37°C in an anaerobic atmosphere to produce this lot.

³48 hours at 37°C and anaerobic atmosphere on Tryptic Soy Agar with 5% defibrinated sheep blood

⁴2 colony sizes were observed. Plating of the individual colony types on Tryptic Soy Agar with 5% defibrinated sheep blood, anaerobic atmosphere, for 48 hours showed that they reverted to the mixed colony type.

Figure 1



Date: 06 FEB 2012

Signature:



Title:

Technical Manager, BEI Authentication or designee

ATCC®, on behalf of BEI Resources, hereby represents and warrants that the material provided under this certificate has been subjected to the tests and procedures specified and that the results described, along with any other data provided in this certificate, are true and accurate to the best of ATCC®'s knowledge.

ATCC® is a trademark of the American Type Culture Collection.

You are authorized to use this product for research use only. It is not intended for human use.

