

***Bifidobacterium* sp., Strain 12\_1\_47BFAA**

**Catalog No. HM-30**

**Product Description:** *Bifidobacterium* sp., strain 12\_1\_47BFAA was isolated from an inflamed sigmoid colon biopsy specimen taken from a 25-year-old female patient with active Crohn's disease in Calgary, Alberta, Canada.

**Lot<sup>1,2</sup>: 59994673**

**Manufacturing Date: 05OCT2011**

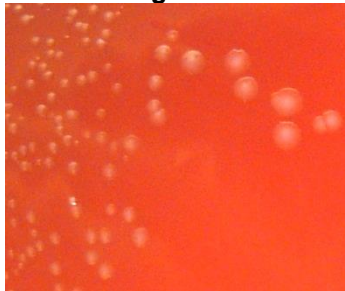
| TEST  | SPECIFICATIONS   | RESULTS  |
|---|--|--|
| <b>Phenotypic Analysis</b><br>Cellular morphology<br>Colony morphology <sup>3</sup> | Report results<br>Report results   | Gram-positive rod<br>Circular, convex, entire and glistening<br>(Figure 1)                 |
| <b>Genotypic Analysis</b><br>Sequencing of 16S ribosomal RNA gene (1400 base pairs) | ≥ 99% identical to GenBank: ADCN01000062 ( <i>Bifidobacterium</i> sp., strain 12_1_47BFAA) | ≥ 99% identical to GenBank: ADCN01000062 ( <i>Bifidobacterium</i> sp., strain 12_1_47BFAA) |
| <b>Viability (post-freeze)<sup>3</sup></b>  | Growth   | Growth   |

<sup>1</sup>Quality control of HMP material is only performed to demonstrate that the material distributed by BEI Resources is identical to the deposited material. It should not be considered a complete characterization of the deposited organism.

<sup>2</sup>*Bifidobacterium* sp., strain 12\_1\_47BFAA was deposited by Professor Emma Allen-Vercoe, Department of Molecular and Cellular Biology, University of Guelph, Guelph, Ontario, Canada. HM-30 was produced by inoculation of the deposited material into Reinforced Clostridial Broth ([ATCC medium 1053](#)) and incubated for 72 hours at 37°C in an anaerobic atmosphere (80% N<sub>2</sub>:10% CO<sub>2</sub>:10% H<sub>2</sub>). The material from the initial growth was passaged once in Reinforced Clostridial Medium for 48 hours at 37°C in an anaerobic atmosphere to produce this lot.

<sup>3</sup>24 hours at 37°C in an anaerobic atmosphere on Tryptic Soy Agar with 5% defibrinated sheep blood

**Figure 1**



**Date:** 06 FEB 2012

**Signature:**

**Title:**

Technical Manager, BEI Authentication or designee

ATCC®, on behalf of BEI Resources, hereby represents and warrants that the material provided under this certificate has been subjected by ATCC® to the tests and procedures specified and that the results described, along with any other data provided in this certificate, are true and accurate to the best of ATCC®'s knowledge.

ATCC® is a trademark of the American Type Culture Collection.

You are authorized to use this product for research use only. It is not intended for human use.

