

***Fusobacterium nucleatum* subsp. *polymorphum*, Strain F0401**

Catalog No. HM-260

Product Description: *Fusobacterium nucleatum* (*F. nucleatum*) subsp. *polymorphum*, strain F0401 was isolated from a transtracheal biofilm from a healthy patient.

Lot^{1,2}: 60326766

Manufacturing Date: 13OCT2011

TEST	SPECIFICATIONS	RESULTS
Phenotypic Analysis Cellular morphology Colony morphology ³	Report results Report results	Gram-negative rod Circular, raised, entire and glistening (Figure 1)
Genotypic Analysis Sequencing of 16S ribosomal RNA gene (~ 1390 base pairs)	≥ 99% identical to GenBank: ADDB01000027 (<i>F. nucleatum</i> subsp. <i>polymorphum</i> , strain F0401)	≥ 99% identical to GenBank: ADDB01000027 (<i>F. nucleatum</i> subsp. <i>polymorphum</i> , strain F0401)
Viability (post-freeze)⁴	Growth	Growth

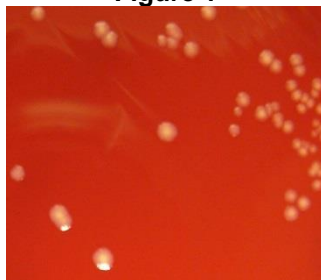
¹Quality control of HMP material is only performed to demonstrate that the material distributed by BEI Resources is identical to the deposited material. It should not be considered a complete characterization of the deposited organism.

²*F. nucleatum* subsp. *polymorphum*, strain F0401 was deposited by Jacques Izard, Assistant Member of the Staff, Department of Molecular Genetics, The Forsyth Institute, Boston, Massachusetts. HM-260 was produced by inoculation of the deposited material into Modified Chopped Meat Medium (ATCC medium 1490) and incubated for 24 hours at 37°C and anaerobic atmosphere (80% N₂:10% CO₂:10% H₂). The material from the initial growth was passaged once in Modified Chopped Meat Medium for 48 hours at 37°C in an anaerobic atmosphere to produce this lot.

³72 hours at 37°C and anaerobic atmosphere (80% N₂:10% CO₂:10% H₂) on Tryptic Soy Agar with 5% defibrinated sheep blood

⁴24 hours at 37°C and anaerobic atmosphere (80% N₂:10% CO₂:10% H₂) on Tryptic Soy Agar with 5% defibrinated sheep blood

Figure 1



Date: 30 JAN 2012

Signature:

Title:

Technical Manager, BEI Authentication or designee

ATCC®, on behalf of BEI Resources, hereby represents and warrants that the material provided under this certificate has been subjected to the tests and procedures specified and that the results described, along with any other data provided in this certificate, are true and accurate to the best of ATCC®'s knowledge.

ATCC® is a trademark of the American Type Culture Collection.

You are authorized to use this product for research use only. It is not intended for human use.

