

***Prevotella melaninogenica*, Strain D18**

**Catalog No. HM-80**

**Product Description:** *Prevotella melaninogenica* (*P. melaninogenica*), strain D18 was isolated in 2007 from an oral swab taken from a 73-year-old, healthy male patient in Calgary, Alberta, Canada.

**Lot<sup>1,2</sup>: 59994686**

**Manufacturing Date: 11NOV2011**

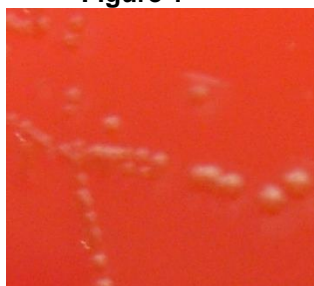
TEST	SPECIFICATIONS	RESULTS
<b>Phenotypic Analysis</b> Cellular morphology Colony morphology <sup>3</sup>	Report results Report results	Gram-negative rod Circular, entire to slightly undulate, low convex, glistening and buff (Figure 1)
<b>Genotypic Analysis</b> Sequencing of 16S ribosomal RNA gene (~ 1390 base pairs)	≥ 99% identical to GenBank: ACWY01000141 ( <i>P. melaninogenica</i> , strain D18)	≥ 99% identical to GenBank: ACWY01000141 ( <i>P. melaninogenica</i> , strain D18)
<b>Viability (post-freeze)<sup>3</sup></b>	Growth	Growth

<sup>1</sup>Quality control of HMP material is only performed to demonstrate that the material distributed by BEI Resources is identical to the deposited material. It should not be considered a complete characterization of the deposited organism.

<sup>2</sup>*P. melaninogenica*, strain D18 (4\_A\_2) was deposited by Professor Emma Allen-Vercoe, Department of Molecular and Cellular Biology, University of Guelph, Guelph, Ontario, Canada. The deposited material was inoculated into Modified Chopped Meat Medium (ATCC medium 1490) and incubated for 48 hours at 37°C and anaerobic atmosphere (80% N<sub>2</sub>:10% CO<sub>2</sub>:10% H<sub>2</sub>). Broth was then added to Kolles and incubated for 48 hours at 37°C and anaerobic atmosphere to produce this lot.

<sup>3</sup>48 hours at 37°C and anaerobic atmosphere (80% N<sub>2</sub>:10% CO<sub>2</sub>:10% H<sub>2</sub>) on Tryptic Soy Agar with 5% defibrinated sheep blood

**Figure 1**



**Date:** 13 FEB 2012

**Signature:**

**Title:** Technical Manager, BEI Authentication or designee

ATCC®, on behalf of BEI Resources, hereby represents and warrants that the material provided under this certificate has been subjected to the tests and procedures specified and that the results described, along with any other data provided in this certificate, are true and accurate to the best of ATCC®'s knowledge.

ATCC® is a trademark of the American Type Culture Collection. You are authorized to use this product for research use only. It is not intended for human use.

