

Mobiluncus mulieris, Strain UPII 28-I

Catalog No. HM-125

Product Description: *Mobiluncus mulieris* (*M. mulieris*), strain UPII 28-I (also referred to as strain 28-I) was isolated from a human vaginal cavity.

Lot^{1,2}: 60232283

Manufacturing Date: 19AUG2011

TEST	SPECIFICATIONS	RESULTS
Phenotypic Analysis Cellular morphology ³ Colony morphology ⁴	Report results Report results	Gram-negative rod Circular, convex and translucent (Figure 1)
Genotypic Analysis Sequencing of 16S ribosomal RNA gene (~ 1390 base pairs)	≥ 99% identical to Genbank ADBR01000053 (<i>M. mulieris</i> , strain 28-I)	≥ 99% identical to Genbank ADBR01000053 (<i>M. mulieris</i> , strain 28-I)
Viability (post-freeze)⁴	Growth	Growth

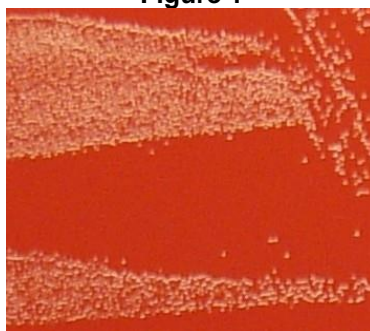
¹Quality control of HMP material is only performed to demonstrate that the material distributed by BEI Resources is identical to the deposited material. It should not be considered a complete characterization of the deposited organism.

²*M. mulieris*, strain UPII 28-I was deposited by Sharon L. Hillier, Ph.D., Professor, Department of Obstetrics, Gynecology and Reproductive Sciences, Magee-Womens Research Institute, University of Pittsburgh, Pittsburgh, Pennsylvania. The deposited material was inoculated into ETSA Medium ([ATCC medium 1257](#)) and incubated for 48 hours at 37°C and anaerobic atmosphere (80% N₂:10% CO₂:10% H₂). The material from the initial growth was passaged once in ETSA Medium for 48 hours at 37°C and anaerobic atmosphere to produce this lot.

³*Mobiluncus* species have a Gram-positive cell wall but generally stain Gram-negative or variable (Spiegel, C. A. and M. Roberts. "*Mobiluncus* gen. nov., *Mobiluncus curtisii* subsp. *curtisii* sp. nov., *Mobiluncus curtisii* subsp. *holmesii* subsp. nov., and *Mobiluncus mulieris* sp. nov., Curved Rods from the Human Vagina." *Int. J. Syst. Bacteriol.* 34 (1984): 177-184).

⁴48 hours at 37°C and anaerobic atmosphere on Tryptic Soy Agar with 5% defibrinated sheep blood

Figure 1



Date: 05 MAR 2012

Signature:

Title:

Technical Manager, BEI Authentication or designee

ATCC®, on behalf of BEI Resources, hereby represents and warrants that the material provided under this certificate has been subjected by ATCC® to the tests and procedures specified and that the results described, along with any other data provided in this certificate, are true and accurate to the best of ATCC®'s knowledge.

ATCC® is a trademark of the American Type Culture Collection.

You are authorized to use this product for research use only. It is not intended for human use.

