

***Mycobacterium tuberculosis*, Strain HN878, Whole Cell Lysate****Catalog No. NR-14824**

This reagent is the tangible property of the U.S. Government.

**Product Description:** *Mycobacterium tuberculosis*, strain HN878 whole cell lysate contains proteins, lipids and carbohydrates present within the bacterial cell.

**Lot: 59811590****Manufacturing Date: 04SEP2011**

QC testing was performed by Colorado State University under the TB Vaccine Testing and Research Materials Contract (NIH). The Colorado State University documentation for lot 10.HN878.5.6.10.WCL is attached.

ATCC<sup>®</sup>, on behalf of BEI Resources, hereby represents and warrants that the material provided under this certificate has been subjected by the contractor to the tests and procedures specified and that the results described, along with any other data provided in this certificate, are true and accurate to the best of ATCC<sup>®</sup>'s knowledge.

ATCC<sup>®</sup> is a trademark of the American Type Culture Collection.

You are authorized to use this product for research use only. It is not intended for human use.



WORK SHEET FOR WHOLE CELL LYSATE

General Information

Product Lot Number: 10.HN878.5.6.10.WCL  
Species: Mycobacterium tuberculosis  
Strain: HN878

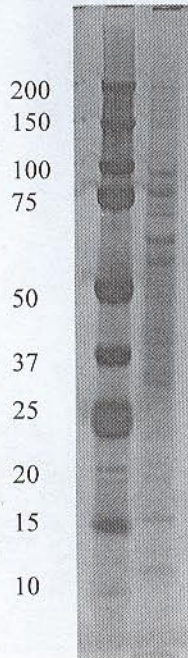
Sonication and Fractionation Information

Starting material (lot #): 10.HN878.5.6.10.WCg  
Cell amount (wet weight): 40g  
SOP #: PP007.2 Notebook pages: Nick Mays pg #48  
Date of French Press Sonication: 08 /30 /11; Buffer used: 1mM EDTA-PBS  
Centrifugation Notes 3000 rpm to remove unbroken cells  
Date 10 mM ammonium bicarbonate dialysis started: 08 /31 /11  
date completed: 09 /04 /11  
Notebook; page(s): Prucha #109

Quality Control Information

Clarity of product/suspension after dialysis: Creamy *(normal)*  
BCA: 9.18  $\mu\text{g}/\mu\text{l}$ . Notebook and page(s): Prucha #110  
Total volume: 120ml Total amount of Protein: 1101.6mg  
Silver Stain Date: 09 /08 /11 . Notebook and page(s): Prucha #110

QC Gel:



Aliquot Information:

C. Lehaffy  
(Research Scientist) 9/20/11  
(date)

K. Prucha 9/20/11  
(Laboratory Supervisor) (date)