

Polyclonal Anti-*Mycobacterium leprae* MLMA-LAM (antiserum, Rabbit)**Catalog No. NR-19358**

This reagent is the tangible property of the U.S. Government.

Product Description:

Antibody Designation: anti-MLMA-LAM

Polyclonal antiserum to membrane protein minus lipoarabinomannan (MLMA-LAM) of *Mycobacterium leprae* was produced in rabbits. The LAM was removed from the membrane protein fraction by TX-114 extraction. The antiserum is reported to be active in ELISA and Western Blot assays.

Lot: rp.MLMA-LAM.01.18.02JS**Manufacturing Date: 18JAN2002**

Production and QC testing were performed by Colorado State University under the Leprosy Research Support Contract (NIH). The Colorado State University documentation for lot rp.MLMA-LAM.01.18.02JS is attached.

ATCC[®], on behalf of BEI Resources, hereby represents and warrants that the material provided under this certificate has been subjected by the contractor to the tests and procedures specified and that the results described, along with any other data provided in this certificate, are true and accurate to the best of ATCC[®]'s knowledge.

ATCC[®] is a trademark of the American Type Culture Collection.

You are authorized to use this product for research use only. It is not intended for human use.



TB Contract Antibody QC Sheet

General Information: Rabbit polyclonal antiserum to MLMA-LAM (*M. leprae* membrane protein with LAM removed by TX-114 extraction)

Product: rabbit polyclonal antiserum against MLMA-LAM, 3^o 11d bleed
 Lot Number: rp.MLMA-LAM.01.18.02JS
 Species: *Mycobacterium leprae*
 Strain: N/A Type: rabbit polyclonal serum

Production Information:

Cell Line: N/A Notebook/pp: John Spencer, Animal Notebook, 2001-2007, pp 26-29
 Amount of serum harvested: 63 mL Clarity: clear

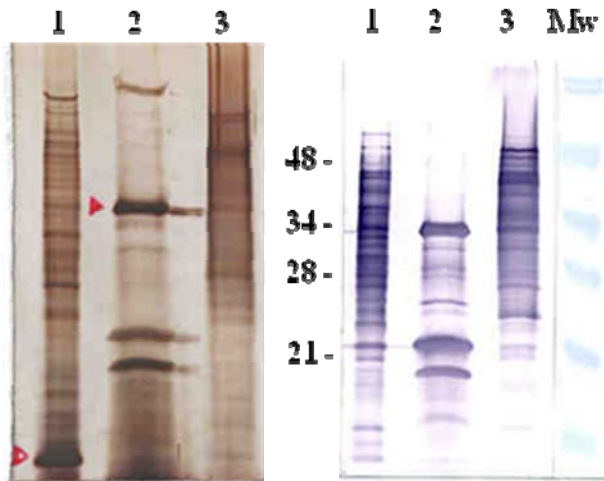
QC Information: Silver stain of *M. leprae* subcellular fractions MLSA-LAM (cytosol), MLMA-LAM (membrane), MLCwA-LAM (cell wall); Western blot of same.

Tested Against: MLSA-LAM, MLMA-LAM, MLCwA-LAM SOP#: Notebook/pp: John Spencer, Animal Notebook, 2001-2006, pp 27-29

Titer: >1:5,000 Western blot: >1:5,000 ELISA: unknown

Special Instructions: 250 µL, lyophilized; reconstitute with sterile distilled water; store frozen

QC Western blot: lane 1, 2 µg MLSA-LAM; lane 2, 5 µg MLMA-LAM; lane 3, 2 µg MLCwA-LAM



anti-MLMA-LAM

Aliquot Information: _____ 250 µL, lyophilized _____

John Spencer

John Spencer

Produced 1/18/02

Lab Supervisor / Date 6/23/10