

Polyclonal Anti-*Mycobacterium leprae* ML2028/Ag85B (antiserum, Rabbit)

Catalog No. NR-19362

This reagent is the tangible property of the U.S. Government.

Product Description:

Antibody Designation: anti-ML2028

Polyclonal antiserum to antigen 85 complex B (ML2028/Ag85B) protein of *Mycobacterium leprae* was produced in rabbits. The antiserum is reported to be active in ELISA and Western Blot assays.

Lot: rp.ML2028.08.24.07JS

Manufacturing Date: 24AUG2007

QC testing was performed by Colorado State University under the Leprosy Research Support Contract (NIH). The Colorado State University documentation for lot rp.ML2028.08.24.07JS is attached.

ATCC[®], on behalf of BEI Resources, hereby represents and warrants that the material provided under this certificate has been subjected by the contractor to the tests and procedures specified and that the results described, along with any other data provided in this certificate, are true and accurate to the best of ATCC[®]'s knowledge.

ATCC[®] is a trademark of the American Type Culture Collection.

You are authorized to use this product for research use only. It is not intended for human use.



TB Contract Antibody QC Sheet

General Information: Rabbit polyclonal antiserum to recombinant *M. leprae* protein ML2028 (Ag85B)

Product: rabbit polyclonal antiserum against ML2028; 4° 7d bleed

Lot Number: rp.ML2028.08.24.07JS

Species: *Mycobacterium leprae*

Strain: N/A Type: rabbit polyclonal serum

Production Information:

Cell Line: N/A Notebook/pp: John Spencer, Animal Notebook, 2001-2007, pg 143

Amount of serum harvested: 50 mL Clarity: clear

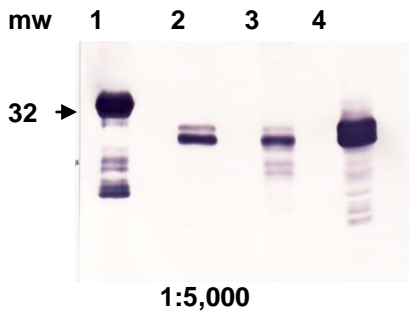
QC Information: Western blot towards recombinant *M. leprae* ML2028 (Ag85B), native *M. leprae* MLSA (cytosol) and MLMA (membrane) proteins, and native *M. tb* culture filtrate protein (CFP), the latter to check for cross-reactivity towards *M. tb* Ag85 complex.

Notebook/pp: John Spencer, Animal Notebook, 2001-2007, pg 143

Titer: >1:5,000 Western blot: >1:5,000 ELISA: >1:2,000

Special Instructions: 250 µL, lyophilized; reconstitute with sterile distilled water; store frozen

QC Western blot: lane 1, 0.25 µg recombinant ML2028; lane 2, 1.25 µg *M. leprae* native MLSA cytosolic protein; lane 3, 1.25 µg *M. leprae* native MLMA membrane protein; lane 4, 1.25 µg native *M. tb* culture filtrate protein.



Aliquot Information: _____ 250 µL, lyophilized _____

John Spencer

John Spencer

Produced 8/24/07

Lab Supervisor / Date 6/23/10