

**Monoclonal Anti-*Mycobacterium leprae* ML0380/GroES, Clone CS-01 (produced *in vitro*)**

**Catalog No. NR-19364**

This reagent is the tangible property of the U.S. Government.

**Product Description:**

Antibody Class: IgG<sub>3</sub>

Antibody Designation: CS-01

Monoclonal antibody to *Mycobacterium leprae* chaperonin protein (ML0380/GroES) [also known as 10 kDa protein, major cytoplasmic protein (MCP)] was produced in cell culture using a B cell hybridoma generated by the fusion of myeloma cells with immunized mouse splenocytes.

**Lot: mm.CS-01.06.08.2010JS**

**Manufacturing Date: 08JUN2010**

QC testing was performed by Colorado State University under the Leprosy Research Support Contract (NIH). The Colorado State University documentation for lot mm.CS-01.06.08.2010JS is attached.

ATCC<sup>®</sup>, on behalf of BEI Resources, hereby represents and warrants that the material provided under this certificate has been subjected by the contractor to the tests and procedures specified and that the results described, along with any other data provided in this certificate, are true and accurate to the best of ATCC<sup>®</sup>'s knowledge.

ATCC<sup>®</sup> is a trademark of the American Type Culture Collection.

You are authorized to use this product for research use only. It is not intended for human use.



**TB Contract Antibody QC Sheet**

**General Information:** Mouse monoclonal antiserum to ML0380 (*M. leprae* 10 kDa, GroES)

Product: mouse monoclonal CS-01 5d culture supernatant

Lot Number: mm.CS-01.06.08.2010JS

Species: *Mycobacterium leprae*

Strain: N/A Type: mouse mAb

**Production Information:**

Cell Line: N/A Notebook/pp: John Spencer, Notebook #3, pp 146-147

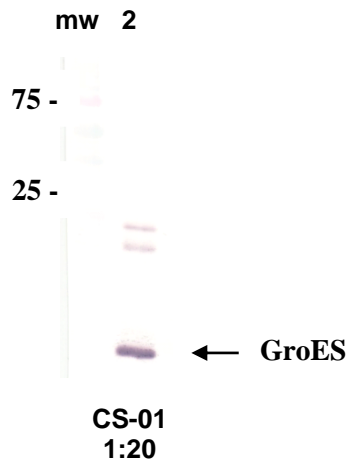
Amount of supernatant harvested: 80 mL Clarity: clear

**QC Information:** Western blot towards native *M. leprae* MLSA (cytosol) protein.

Notebook/pp: same as above Titer: >1:20 Western blot: >1:20

**Special Instructions:** 1 mL, lyophilized; reconstitute with sterile distilled water; store frozen

QC Western blot: lane 1, mw markers; lane 2, 1.25 µg *M. leprae* native MLSA protein.



**Aliquot Information:** \_\_\_\_\_ 1 mL, lyophilized \_\_\_\_\_

Produced 6/8/10

Lab Supervisor / Date 6/23/10