

**Monoclonal Anti-Influenza A Virus Nucleoprotein (NP), A/California/04/2009 (H1N1)pdm09, Clone 2F4 (produced *in vitro*)**

**Catalog No. NR-19868**

This reagent is the property of the U.S. Government.

**Product Description:** Mouse monoclonal antibody prepared against the nucleoprotein (NP) of the A/California/04/2009 (H1N1)pdm09 strain of influenza A virus was purified from clone 2F4 hybridoma supernatant by protein G affinity chromatography.

**Lot: 59476518**

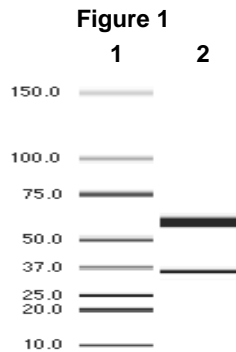
**Manufacturing Date: 02NOV2010**

TEST	SPECIFICATIONS	RESULTS
Antibody Class Determination	Report results	IgG1k
Experion Pro260 Analysis	Correct molecular weight (MW) for heavy and light chains Report results	Correct MW for heavy and light chains (Figure 1) 96.9% pure
Concentration by Spectrophotometer at OD <sub>280</sub>	Report results	1.0 mg/mL
Functional Activity Indirect Immunofluorescence Assay <sup>1</sup> A/California/04/2009 (H1N1)pdm09 <sup>2</sup> A/swine/Iowa/15/1930 (H1N1) <sup>3</sup>	Fluorescence observed Fluorescence observed	Fluorescence observed (Figure 2) Fluorescence observed (Figure 3)
Sterility	0.22 µm filter-sterilized	0.22 µm filter-sterilized

<sup>1</sup>MDCK cells (ATCC® CCL-34™) were infected with the indicated influenza virus at an MOI of 0.1 and stained 3 days later with a 1:300 dilution of NR-19868, and FITC-conjugated goat anti-mouse IgG F(ab')<sub>2</sub> fragment (Millipore 5008).

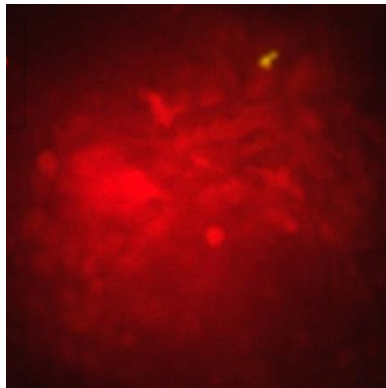
<sup>2</sup>BEI Resources NR-13658

<sup>3</sup>ATCC® VR-1683™

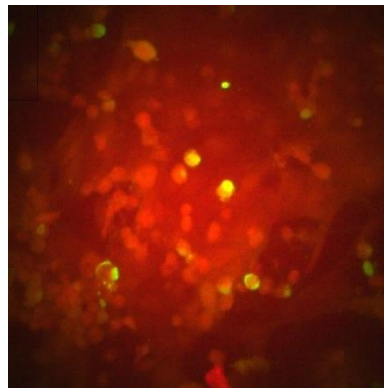


Lane 1: MW Markers (kDa)  
Lane 2: NR-19868

Figure 2

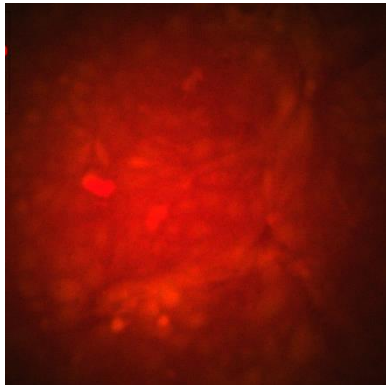


A. Mock-infected

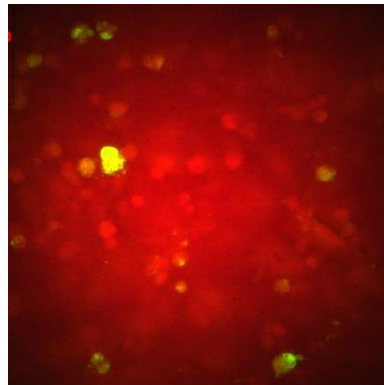


B. A/California/04/2009 (H1N1)pdm09-infected

Figure 3



A. Mock-infected



B. A/swine/15/1930 (H1N1)-infected

Date: 20 AUG 2013

Signature: *Dorothy C. Young*

Title: Technical Manager, BEI Authentication or designee

ATCC<sup>®</sup>, on behalf of BEI Resources, hereby represents and warrants that the material provided under this certificate has been subjected to the tests and procedures specified and that the results described, along with any other data provided in this certificate, are true and accurate to the best of ATCC<sup>®</sup>'s knowledge.

ATCC<sup>®</sup> is a trademark of the American Type Culture Collection.  
You are authorized to use this product for research use only. It is not intended for human use.

