

***Propionibacterium acnes*, Strain HL013PA1**

**Catalog No. HM-497**

**Product Description:** *Propionibacterium acnes* (*P. acnes*), strain HL013PA1 was isolated from human skin.

**Lot<sup>1,2</sup>: 60400051**

**Manufacturing Date: 26JAN2012**

TEST	SPECIFICATIONS	RESULTS
<b>Phenotypic Analysis</b> Cellular morphology Colony morphology <sup>3</sup>	Report results Report results	Gram-positive rod Circular, entire, white and rough (Figure 1)
<b>Genotypic Analysis</b> Sequencing of 16S ribosomal RNA gene (1410 base pairs)	≥ 99% identical to GenBank: ADZH01000012 ( <i>P. acnes</i> , strain HL013PA1)	≥ 99% identical to GenBank: ADZH01000012 ( <i>P. acnes</i> , strain HL013PA1)
<b>Viability (post-freeze)<sup>4</sup></b>	Growth	Growth

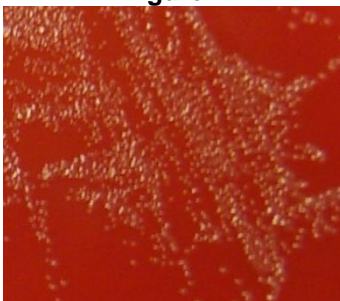
<sup>1</sup>Quality control of HMP material is only performed to demonstrate that the material distributed by BEI Resources is identical to the deposited material. It should not be considered a complete characterization of the deposited organism.

<sup>2</sup>*P. acnes*, strain HL013PA1 was deposited by Professor Huiying Li, Ph.D., Department of Molecular and Medical Pharmacology, University of California, Los Angeles (UCLA), Los Angeles, California. The deposited material was inoculated into Modified Reinforced Clostridial Broth (ATCC medium 2107) and incubated for 48 hours at 37°C and anaerobic atmosphere (80% N<sub>2</sub>:10% CO<sub>2</sub>:10% H<sub>2</sub>). The material from the initial growth was passaged once in Modified Reinforced Clostridial Broth for 24 hours at 37°C and anaerobic atmosphere [80% N<sub>2</sub>:10% CO<sub>2</sub>:10% H<sub>2</sub>] to produce this lot.

<sup>3</sup>48 hours at 37°C and anaerobic atmosphere on Tryptic Soy Agar with 5% defibrinated sheep blood

<sup>4</sup>24 hours at 37°C and anaerobic atmosphere on Tryptic Soy Agar with 5% defibrinated sheep blood

**Figure 1**



**Date:** 04 MAY 2012

**Signature:**

**Title:** Technical Manager, BEI Authentication or designee

ATCC®, on behalf of BEI Resources, hereby represents and warrants that the material provided under this certificate has been subjected to the tests and procedures specified and that the results described, along with any other data provided in this certificate, are true and accurate to the best of ATCC®'s knowledge.

ATCC® is a trademark of the American Type Culture Collection.

You are authorized to use this product for research use only. It is not intended for human use.

