

Monoclonal Anti-*Francisella tularensis* Lipoprotein A (LpnA/Tul4), Clone 164.75 (culture supernatant)

Catalog No. NR-29019

Product Description: Mouse monoclonal antibody prepared against lipoprotein A (LpnA/Tul4) of *Francisella tularensis* (*F. tularensis*) was produced *in vitro* from clone 164.75.

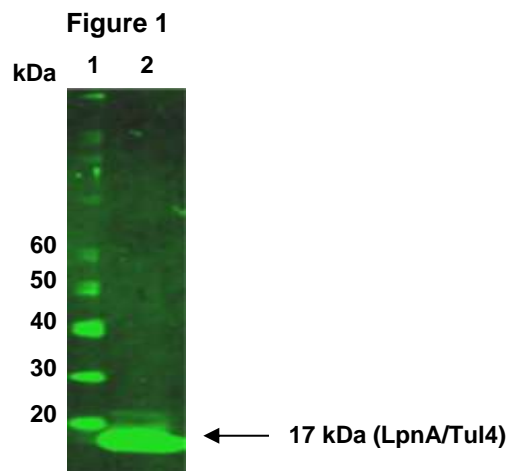
Lot¹: 60212347

Manufacturing Date: 03FEB2012

TEST	SPECIFICATIONS	RESULTS
Antibody Class Determination	Report results	IgG1k
Functional Activity by Western Blot (Figure 1) ²	Reactive with <i>F. tularensis</i> subsp. <i>holarctica</i> LpnA/Tul4	Reactive with <i>F. tularensis</i> subsp. <i>holarctica</i> LpnA/Tul4
Sterility	0.22 µm filter-sterilized	0.22 µm filter-sterilized

¹Conditioned supernatant was harvested from stationary phase hybridoma cell cultures; the antibody is provided in a background of 70% Hybridoma Serum Free Medium (Gibco® 12045) and 30% Dulbecco's Modified Eagle Medium (ATCC® 30-2002) supplemented with MEM Non-Essential Amino Acid Solution (ATCC® 30-2116).

²Using an SDS extract of the Live Vaccine Strain (LVS) of *F. tularensis* subsp. *holarctica* (BEI Resources NR-646) and undiluted NR-29019 followed by a 1:10000 dilution of IRDye 800CW-conjugated goat anti-mouse IgG (H + L) secondary antibody (LI-COR® 926-32210); visualized on a LI-COR® Biosciences Odyssey® Infrared Imaging System.



Lane 1: Magic Mark™ XP (Invitrogen™ LC 5602)
Lane 2: *F. tularensis* subsp. *holarctica* LVS extract

Date: 24 MAY 2012

Signature:

Dorothy C. Young

Title:

Technical Manager, BEI Authentication or designee

ATCC®, on behalf of BEI Resources, hereby represents and warrants that the material provided under this certificate has been subjected to the tests and procedures specified and that the results described, along with any other data provided in this certificate, are true and accurate to the best of ATCC®'s knowledge.

ATCC® is a trademark of the American Type Culture Collection.

You are authorized to use this product for research use only. It is not intended for human use.

