

**Prevotella nigrescens, Strain F0103**

**Catalog No. HM-271**

**Product Description:** *Prevotella nigrescens* (*P. nigrescens*), strain F0103 was isolated from a human oral cavity.

**Lot<sup>1,2</sup>: 60326767**

**Manufacturing Date: 11JAN2012**

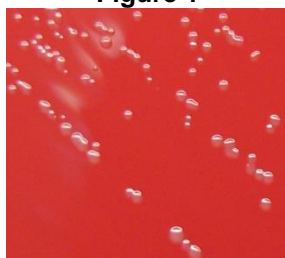
TEST	SPECIFICATIONS	RESULTS
<b>Phenotypic Analysis</b> Cellular morphology Colony morphology <sup>3</sup>	Report results Report results	Gram-negative rod Circular, pinpoint and gray (Figure 1)
<b>Genotypic Analysis</b> Sequencing of 16S ribosomal RNA gene (~ 1440 base pairs)	≥ 99% identical to depositor's sequence Consistent with <i>P. nigrescens</i>	≥ 99% identical to depositor's sequence Consistent with <i>P. nigrescens</i>
<b>Viability (post-freeze)<sup>3</sup></b>	Growth	Growth

<sup>1</sup>Quality control of HMP material is only performed to demonstrate that the material distributed by BEI Resources is identical to the deposited material. It should not be considered a complete characterization of the deposited organism.

<sup>2</sup>*P. nigrescens*, strain F0103 was deposited by Jacques Izard, Assistant Member of the Staff, Department of Molecular Genetics, The Forsyth Institute, Boston, Massachusetts. The deposited material was inoculated into Modified Chopped Meat Medium ([ATCC medium 1490](#)) and incubated for 72 hours at 37°C and anaerobic atmosphere (80% N<sub>2</sub>:10% CO<sub>2</sub>:10% H<sub>2</sub>). The material from the initial growth was passaged once into Modified Chopped Meat Medium for 48 hours at 37°C and anaerobic atmosphere and then pelleted and frozen. After several weeks the pellet was resuspended in Modified Chopped Meat Medium and added to Kolles which were grown for 48 hours at 37°C and anaerobic atmosphere to produce this lot.

<sup>3</sup>72 hours at 37°C and anaerobic atmosphere on Tryptic Soy Agar with 5% defibrinated sheep blood

**Figure 1**



**Date:** 21 MAY 2012

**Signature:**

**Title:** Technical Manager, BEI Authentication or designee

ATCC®, on behalf of BEI Resources, hereby represents and warrants that the material provided under this certificate has been subjected to the tests and procedures specified and that the results described, along with any other data provided in this certificate, are true and accurate to the best of ATCC®'s knowledge.

ATCC® is a trademark of the American Type Culture Collection. You are authorized to use this product for research use only. It is not intended for human use.

