

***Eubacterium infirmum*, Strain F0142**

Catalog No. HM-369

Product Description: *Eubacterium infirmum* (*E. infirmum*), strain F0142 was isolated in August 1982 from the subgingival dental plaque of a 23-year-old black female patient with periodontitis.

Lot^{1,2}: 60609350

Manufacturing Date: 20JAN2012

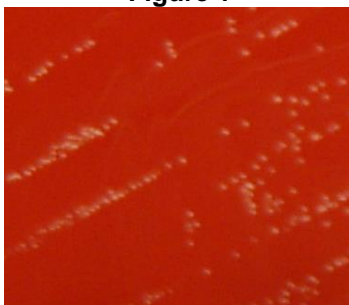
TEST	SPECIFICATIONS	RESULTS
Phenotypic Analysis Cellular morphology Colony morphology ³	Report results Report results	Gram-positive rods Circular, entire and translucent (Figure 1)
Genotypic Analysis Sequencing of 16S ribosomal RNA gene (~1460 base pairs)	≥ 99% identical to GenBank: AGWI01000033 (<i>E. infirmum</i> , strain F0142)	≥ 99% identical to GenBank: AGWI01000033 (<i>E. infirmum</i> , strain F0142)
Viability (post-freeze)³	Growth	Growth

¹Quality control of HMP material is only performed to demonstrate that the material distributed by BEI Resources is identical to the deposited material. It should not be considered a complete characterization of the deposited organism.

²*E. infirmum*, strain F0142 was deposited by Jacques Izard, Assistant Member of the Staff, Department of Molecular Genetics, The Forsyth Institute, Boston, Massachusetts. HM-369 was produced by inoculation of the deposited material into Modified Reinforced Clostridial Broth ([ATCC medium 2107](#)) and incubated for 72 hours at 37°C and anaerobic atmosphere (80% N₂:10% CO₂:10% H₂). The material from the initial growth was passaged three times in Modified Chopped Meat Medium at 37°C and anaerobic atmosphere to produce this lot.

³72 hours at 37°C and anaerobic atmosphere on Tryptic Soy Agar with 5% defibrinated sheep blood

Figure 1



Date: 22 MAY 2012

Signature:

Title:

Technical Manager, BEI Authentication or designee

ATCC®, on behalf of BEI Resources, hereby represents and warrants that the material provided under this certificate has been subjected to the tests and procedures specified and that the results described, along with any other data provided in this certificate, are true and accurate to the best of ATCC®'s knowledge.

ATCC® is a trademark of the American Type Culture Collection.

You are authorized to use this product for research use only. It is not intended for human use.

