

**Peptoniphilus sp., Oral Taxon 836, Strain F0141**

**Catalog No. HM-263**

**Product Description:** *Peptoniphilus* sp., Oral Taxon 836, strain F0141 was isolated in November 1980 from subgingival plaque of a 20-year-old black female patient with severe periodontitis in the United States.

**Lot<sup>1,2</sup>: 60712398**

**Manufacturing Date: 02MAR2012**

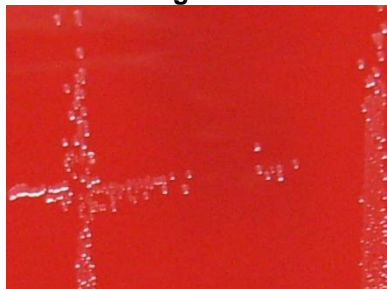
TEST	SPECIFICATIONS	RESULTS
<b>Phenotypic Analysis</b> Cellular morphology Colony morphology <sup>3</sup>	Report results Report results	Gram-positive cocci Circular, raised, entire and translucent (Figure 1)
<b>Genotypic Analysis</b> Sequencing of 16S ribosomal RNA gene (~ 1460 base pairs)	≥ 99% identical to GenBank: AEAA01000090 ( <i>Peptoniphilus</i> sp. Oral Taxon 836, strain F0141)	≥ 99% identical to GenBank: AEAA01000090 ( <i>Peptoniphilus</i> sp. Oral Taxon 836, strain F0141)
<b>Viability (post-freeze)<sup>3</sup></b>	Growth	Growth

<sup>1</sup>Quality control of HMP material is only performed to demonstrate that the material distributed by BEI Resources is identical to the deposited material. It should not be considered a complete characterization of the deposited organism.

<sup>2</sup>*Peptoniphilus* sp., Oral Taxon 836, strain F0141 was deposited by Jacques Izard, Assistant Member of the Staff, Department of Molecular Genetics, The Forsyth Institute, Boston, Massachusetts, USA. The deposited material was inoculated into Modified Reinforced Clostridial broth (ATCC medium 2107) and incubated for 48 hours at 37°C in an anaerobic atmosphere. The material from the initial growth was passaged once in Modified Reinforced Clostridial broth for 48 hours at 37°C in an anaerobic atmosphere to produce this lot.

<sup>3</sup>72 hours at 37°C in an anaerobic atmosphere on Tryptic Soy agar with 5% defibrinated sheep blood

**Figure 1**



**Date:** 02 APR 2015

**Signature:**

**Title:**

Technical Manager, BEI Authentication or designee

ATCC®, on behalf of BEI Resources, hereby represents and warrants that the material provided under this certificate has been subjected to the tests and procedures specified and that the results described, along with any other data provided in this certificate, are true and accurate to the best of ATCC's knowledge.

ATCC® is a trademark of the American Type Culture Collection.

You are authorized to use this product for research use only. It is not intended for human use.

