

Genomic DNA from *Francisella tularensis* subsp. *tularensis*, Strain WY96-3418

Catalog No. NR-3016

This reagent is the property of the U.S. Government.

Product Description: Genomic DNA was isolated from a preparation of *Francisella tularensis* (*F. tularensis*) subsp. *tularensis*, strain WY96-3418.

Lot¹: 7513126

Manufacturing Date: 19JUL2005

TEST	SPECIFICATIONS	RESULTS
Sequencing of 16S Ribosomal RNA Gene	Identical to BEI Resources NR-644 Consistent with <i>F. tularensis</i> subsp. <i>tularensis</i>	Identical to BEI Resources NR-644 (~ 430 bp) Consistent with <i>F. tularensis</i> subsp. <i>tularensis</i> (~ 1340 bp) ²
Molecular Subtyping by PCR Amplification³	Type A (subsp. <i>tularensis</i>)	Type A (subsp. <i>tularensis</i>)
Agarose Gel Electrophoresis	High molecular weight chromosomal DNA	High molecular weight chromosomal DNA (Figure 1)
Concentration by PicoGreen[®] Measurement	4 to 6 µg in 25 to 100 µL per vial	4.6 µg in 99 µL per vial (46 µg/mL)
Functional Activity by PCR Amplification 16S ribosomal RNA gene Molecular subtyping ³	~ 1500 bp amplicon ~ 390 bp amplicon (Type A)	~ 1500 bp amplicon ~ 390 bp amplicon (Type A)
OD₂₆₀/OD₂₈₀ Ratio	1.7 to 1.9	1.8
Bacterial Inactivation 10% of total yield plated on CHA with 5% rabbit blood ^{4,5}	No viable bacteria detected	No viable bacteria detected

¹*F. tularensis* subsp. *tularensis*, strain WY96-3418 was deposited by the Centers for Disease Control and Prevention, Division of Vector-Borne Infectious Diseases, Fort Collins, Colorado. The deposited material was prepared by broth (Brain Heart Infusion) culture of a single colony isolated from the CDC Reference Collection stock. The bacterial preparation used for extraction of genomic DNA was produced by propagation of the CDC deposited material on Cystine Heart Agar plus 5% defibrinated rabbit blood. After incubation for 24 hours at 37°C and aerobic atmosphere with 5% CO₂, genomic DNA was extracted using proprietary technology.

²Also consistent other *F. tularensis* subspecies.

³Petersen, J. M., et al. "Laboratory Analysis of Tularemia in Wild-Trapped, Commercially Traded Prairie Dogs, Texas, 2002." *Emerg. Infect. Dis.* 10 (2004): 419–425. PubMed: 15109407.

⁴Cystine Heart Agar plus defibrinated rabbit blood; incubated for 7 days at 37°C and aerobic atmosphere with 5% CO₂.

⁵An extraction procedure was used that has been shown to consistently inactivate 100% of gram negative bacteria.

Date: 02 JAN 2007

Signature: Signature on File

Title: Technical Manager, BEI Authentication

ATCC[®], on behalf of BEI Resources, hereby represents and warrants that the material provided under this certificate has been subjected to the tests and procedures specified and that the results described, along with any other data provided in this certificate, are true and accurate to the best of ATCC[®]'s knowledge.

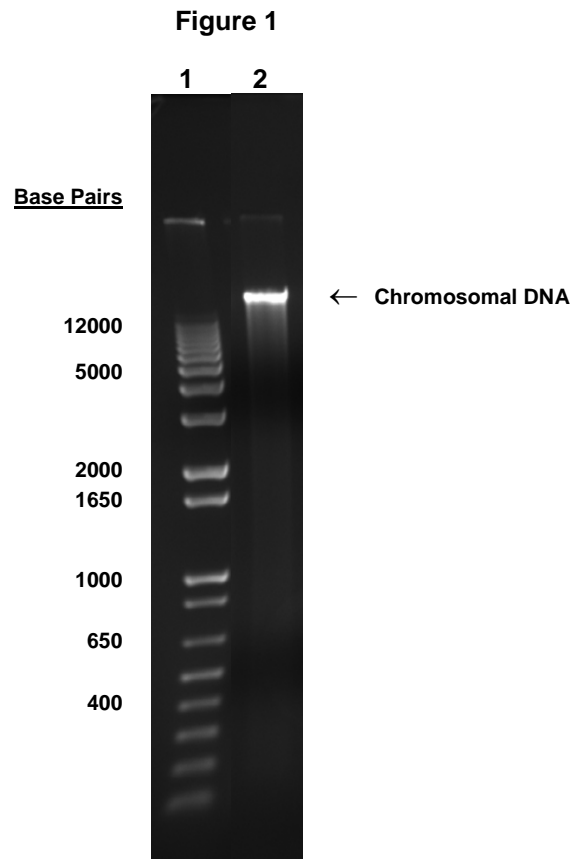
ATCC[®] is a trademark of the American Type Culture Collection.

You are authorized to use this product for research use only. It is not intended for human use.

Biodefense and Emerging Infections Research Resources Repository

P.O. Box 4137
 Manassas, VA 20108-4137 USA
www.beiresources.org

800-359-7370
 Fax: 703-365-2898
 E-mail: contact@beiresources.org



Lane 1: Invitrogen™ TrackIt™ 1 Kb Plus DNA Ladder
Lane 2: 200 ng of NR-3016