

**Polyclonal Anti-Shiga Toxin 2 Subunit B (IgG, Rabbit)**

**Catalog No. NR-9352**

This reagent is the tangible property of the U.S. Government.

**Product Description:** Polyclonal immune globulin G antibody to the recombinant B subunit of Shiga toxin 2 from *Escherichia coli* was produced in rabbit and purified by protein G affinity chromatography.

**Lot: 59776208**

**Manufacturing Date: 16FEB2012**

TEST	SPECIFICATIONS	RESULTS
<b>Appearance</b>	Clear and colorless	Clear and colorless
<b>SDS-PAGE (Non-reducing; SYPRO Orange Densitometer scan)</b>	Dominant band ~ 150 kDa ≥ 95% pure	Dominant band ~ 150 kDa ≥ 95% pure (Figure 1)
<b>Concentration by Bicinchoninic Acid Protein Assay</b>	1.0 mg/mL ± 5%	1.0 mg/mL
<b>Functional Activity</b> Western Blot (Figure 2) Shiga toxin 2 subunit B, recombinant Shiga toxin 2 holotoxin Carbonic anhydrase ELISA titer (Figure 3) Shiga toxin 2 subunit B, recombinant Carbonic anhydrase Neutralization Shiga toxin 2 holotoxin	Reactive Report results Not reactive  Report results Not reactive  Neutralization at ≤1:40 dilution	Reactive Reactive Not reactive  > 1:1000 Not reactive  Neutralization at 1:30 dilution
<b>Sterility</b>	0.22 µM filter-sterilized	0.22 µM filter-sterilized

**Date:** 21 NOV 2014

**Signature:**



**Title:** Technical Manager, BEI Authentication or designee

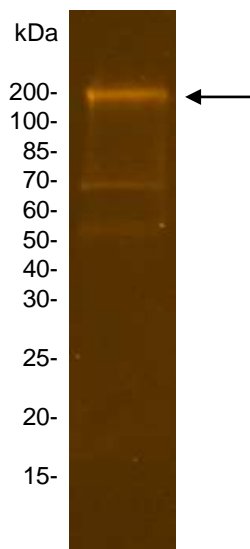
ATCC®, on behalf of BEI Resources, hereby represents and warrants that the material provided under this certificate has been subjected by the contractor to the tests and procedures specified and that the results described, along with any other data provided in this certificate, are true and accurate to the best of ATCC®'s knowledge.

ATCC® is a trademark of the American Type Culture Collection.

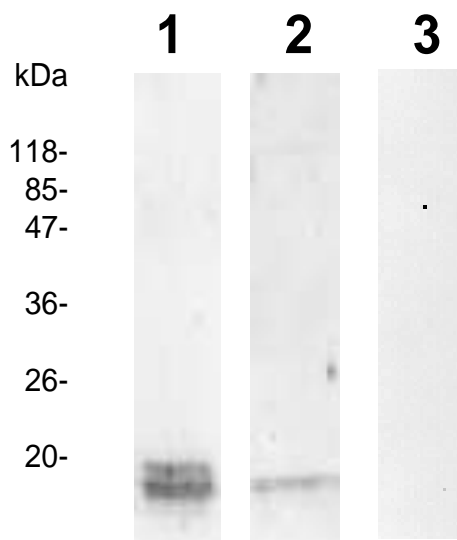
You are authorized to use this product for research use only. It is not intended for human use.



**Figure 1**



**Figure 2**



Lane 1: Stx2B recombinant antigen  
Lane 2: Stx2 holotoxin  
Lane 3: Carbonic anhydrase (negative control)

**Figure 3**

